

8. Restrooms

Sections 11B-603, 11B-604, 11B-606, 11B-609, and 11B-213

Not all restrooms or features of a building are open on Election Day. However, if there is a restroom available to voters on Election Day, the restroom shall be accessible. When restrooms are available to voters on Election Day, they shall be on an accessible route. (CCR, Section 11B-403.1.) Accessible restrooms shall be identified with an International Symbol of Accessibility (ISA). (CCR, Section 11B-216.8). Restrooms designated for children's use shall not be used. Restroom entrances shall comply with the requirements in Section 3 Doors, Hallways and Entrances. (CCR, Sections 11B-206.4 and 11B-404.1)

There are two types of restrooms: single accommodation and multiple accommodation. Single accommodation restrooms are designed for use by one person at a time behind a door with a privacy lock. Multiple accommodation restrooms allow more than one person at a time to enter and exit the restroom.

There are two sets of restroom signs surveyors may find at the entrance of every restroom. The first set of signs with Braille and raised characters are only required when restrooms are identified with visual signs. These Braille and raised character signs, located on the strike side edge of the door, shall be placed so the lowest part of any Braille cell is 48 inches or higher above the floor and the bottom of any tactile letter is no more than 60 inches above the floor measured from the baseline of raised characters. (CCR, Sections 11B-703.4.1 and 11B-703.4.2.) These signs must have contrasting colors. They may have an optional pictogram to indicate whether the restroom is a Men's, Women's, or Unisex restroom. (CCR, Sections 11B-703.5.1, 11B-213.2, and 11B-703.6.) See Figure 32.



Figure 32: Restroom raised letter and Braille signs.

The second set of signs are required symbols for Men's, Women's, and Unisex restrooms. The Men's restroom sign is identified by an equilateral triangle with edges 12 inches long and the apex pointing upward. The Women's restroom sign is a circle 12 inches in diameter. The Unisex sign is a circle 12 inches in diameter with a triangle placed over the circle within the 12-inch diameter. The circle and triangle must have contrasting colors. These geometric signs shall be mounted at 58 inches minimum and 60 inches maximum above the floor or ground surface measured from the centerline of the sign. The color shall contrast distinctly from the color of the background. (CCR, Section 11B-703.7.2.6.) See Figure 33.



Figure 33: Geometric signs for Men, Women and Unisex restrooms.

Inside the restroom, accessible fixtures such as paper towel dispensers, soap dispensers, or electronic hand dryers shall be on an accessible route. (CCR, Sections 11B-213.2 and 11B-206.2.4.) The minimum width of the restroom accessible route shall be 36 inches and may reduce in width to 32 inches for a length not to exceed 24 inches. (CCR, Section 11B-403.5.1 Exception 1.) All objects on the accessible route that are mounted on walls between 27 inches to 80 inches high must not protrude out from the wall more than 4 inches (CCR, Section 11B-307.2.)

An unobstructed turning space 27 inches high and at least 60 inches in diameter or a T-shaped turning space is required inside the restroom for voters who use wheelchairs. No door may swing into this space more than 12 inches except the door to the accessible toilet compartment. (CCR, Section 11B-603.2.1.) See Figure 34.



Figure 34: The inside of a restroom showing floor space measurements.

Clear spaces 30 inches by 48 inches are required in front of lavatories/sinks, dispensers, mirrors, and other fixtures with controls. (CCR, Section 11B-309.2.) Doors shall not swing into the clear spaces required in front of these items. (CCR, Section 11B-603.2.) The accessible route, the 60-inch diameter turning space, and the clear floor spaces in front of lavatories/sinks, dispensers, mirrors, and other fixtures with controls may overlap. (CCR, Sections 11B-603.2 and 11B-213.2.)

Accessible lavatories/sinks have several clear space requirements illustrated by Figure 35 and described below.

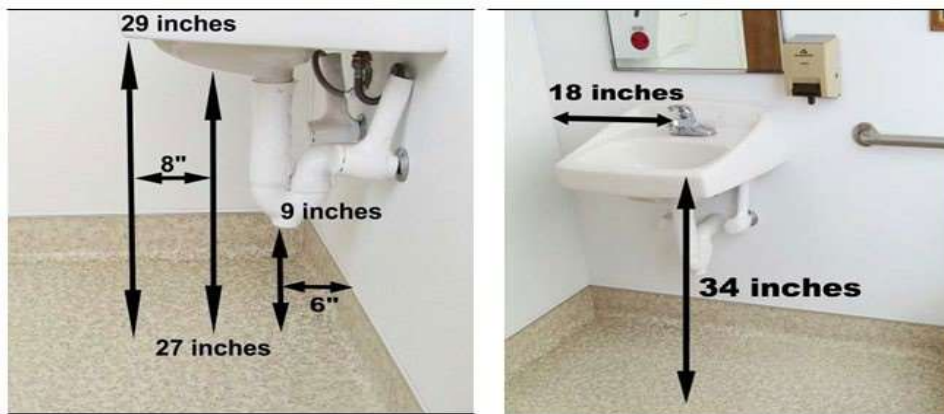


Figure 35: Lavatory/sinks knee clearances and accessible space requirements.

Clear floor spaces are required at lavatories/sinks and shall adjoin or overlap an accessible route in the restroom. The clear floor space may extend up to 19 inches maximum into the knee space underneath the lavatory/sink. (CCR, Sections 11B-306.2.2 Exception and 11B-606.2.) This clear floor space allows a person using a wheelchair for mobility to move close enough to use the faucet controls, dispensers, or mirror.

When lavatories/sinks are located next to a sidewall or partition, a minimum 18 inches of clear space on the counter (measured from the wall to the centerline of the faucet) is required for arm movement. (CCR, Section 11B-606.6.)

The rim or counter edge of the accessible lavatory/sink shall be mounted a maximum of 34 inches from the floor. (CCR, Section 11B-606.3.)

The vertical clearance under the counter at the front edge of the lavatory/sink shall be at least 29 inches above the floor. Moving horizontally 8 inches underneath the lavatory/sink, the measurement is reduced to 27 inches above the floor. The next measurement is clear floor space measured at a point 6 inches forward from the back wall and shall be at least 9 inches high. Toe clear space shall be free of any type of obstructions, including hot water heaters, garbage cans, etc. These measurements are illustrated in Figure 35. (CCR, Section 11B-306.3.3 Exception 1.)

Faucets and other operating mechanisms shall be operable with one hand and not require tight grasping, pinching, or twisting of the wrist. The maximum effort allowed for activating faucet controls is 5 pounds of force. When hand-operated metering faucets are activated, the water shall remain on for at least 10 seconds. (CCR, Sections 11B-309 and 11B-606.4.)

To avoid injury, water pipes and drainpipes under accessible lavatories/sinks shall be insulated or arranged to prevent contact. Sharp or abrasive surfaces under lavatories/sinks shall not be allowed. (CCR, Section 11B-606.5.)

At least one of each type of restroom dispenser or other equipment provided for public use shall be located on an accessible route. At least one of each type of towel holder, sanitary napkin dispenser, waste receptacle, or other dispenser shall be installed with operable controls a maximum of 40 inches above the floor. For operable controls, the movement of the control from beginning to end shall be at or below the 40 inches maximum height and shall not require tight grasping, pinching, or twisting of the wrist. (CCR, Section 11B-603.5.)

Mirrors above lavatories/sinks or countertops shall be mounted with the bottom edge of the reflecting surface no higher than 40 inches from the floor. (CCR, Section 11B-603.3.)

The toilet paper dispenser shall be placed between 7 and 9 inches in front of the toilet when measured to the centerline of the dispenser. The outlet of the dispenser shall be 19 inches minimum above the floor and placed so the outlet is completely below the grab bar. No part of the dispenser shall be located behind the grab bar. Dispensers that control delivery or that do not permit continuous paper flow shall not be used. The entire toilet paper dispensers shall be installed below the side grab bar. (CCR, Section 11B-604.7.1.)

Toilet paper dispensers installed prior to January 1, 2014, may be placed within 12 inches of the front edge of the toilet measured to the centerline of the dispenser.

A multiple accommodation restroom provides one or more toilet stalls. At least one of these toilet stalls shall be accessible. (CCR, Section 11B-213.3.1.) The minimum width for an accessible toilet stall is 60 inches (CCR, Section 11B-604.3.1 and 11B-604.8.1.4.)

When the toilet stall has an end-opening door that faces the toilet, a minimum 60 inches wide by 48 inches deep clear floor space shall be provided in front of the toilet. (CCR, Section 11B-604.8.1.1.3.) If the stall has a side-opening door, a minimum 60 inches wide by 60 inches deep clear floor space shall be provided in front of the toilet. (CCR, Section 11B-604.8.1.1.2.) See Figure 36.

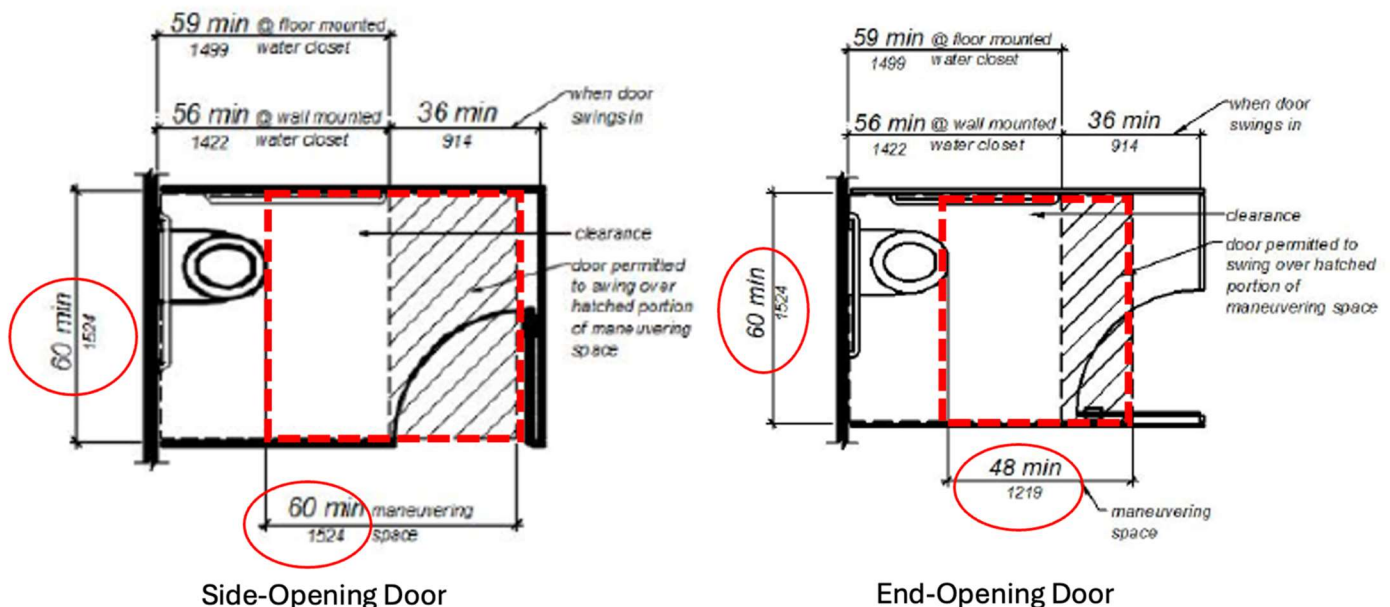


Figure 36: Diagram of maneuvering space in toilet compartments with a side-opening door and end-opening door.

When a stall door is at the end of the stall, facing the toilet, the minimum clear width of the stall door opening shall be 32 inches when measured with the door open to 90 degrees. (CCR, Section 11B-404.3.1) When a stall door is on the side of the stall, its minimum width shall be 34 inches when measured with the door open to 90 degrees. Stall doors shall be self-closing. (CCR, Section 11B-604.8.1.2 Exception.)

The latch hardware on the stall door shall be a flip-over style, sliding or similar hardware that does not require the user to grasp, pinch or twist their wrist. Accessible handles shall be placed near the latch on both the inside and outside of the stall door. (CCR, Section 11B-604.8.1.2 Exception.) See Figure 37.



Figure 37: Restroom door with an accessible handle and flip over style hardware.

Accessible toilet compartment doors shall comply with CCR, Section 11B-404 for doors, except that if the approach is from the push side of the compartment door, clearance between the door side of the compartment and any obstruction shall be 48 inches minimum measured perpendicular to the compartment door in its closed position. Except for door-opening widths and door swings, a clear, accessible route not less than 44 inches wide shall be provided to accessible toilet stalls. (CCR, Section 11B-403.5.1 Exception 5.). See Figure 38.



Figure 38: Restroom clear floor space on the accessible route to the toilet stall.

Accessible compartment stalls shall be 60 inches wide minimum, measured perpendicular to the side wall, and 56 inches deep minimum for wall-hung water closets (toilets) and 59 inches deep minimum for floor-mounted water closets (toilets) measured perpendicular to the rear wall. (CCR, Section 11B-604.8.1.1.)

A minimum 60 inches wide by 48 inches deep clear floor space shall be provided in front of the toilet. No obstruction shall be permitted in the clear floor space between the edge of the toilet and the farthest wall or partition. (CCR, Sections 11B-604.3.1 and 11B-604.3.2.) The centerline of the toilet shall be 17 inches minimum to 18 inches maximum from the nearest sidewall or partition. (CCR, Section 11B-604.2.)

The height of an accessible toilet seat shall be between 17 inches and 19 inches measured from the floor to the top of the toilet seat. (CCR, Section 11B-604.4.) See Figure 36. The flush control shall be mounted no more than 44 inches above the floor and located on the open floor side of the toilet. The flush control shall require no more than 5 pounds of force to operate. (CCR, Section 11B- 604.6.)

Grab bars in the accessible toilet stall shall be provided on the sidewall closest to the toilet and on the rear wall behind the toilet. (CCR, Section 11B-604.5.) Grab bars with a circular cross section shall have an outside diameter of 1 ¼ inches to 2 inches. Grab bars with non-circular cross sections shall have a maximum cross section dimension of 2 inches and a perimeter dimension of 4 inches minimum and 4.8 inches maximum. (CCR, Section 11B-609.2.) Grab bars shall be mounted with a space of 1 ½ inches between the grab bar and the wall. (CCR, Section 11B-609.3.) Grab bars shall be securely attached and centered 33 inches minimum and 36 inches maximum above and parallel to the floor when measured to the top of the gripping surface. (CCR, Section 11B-609.4.)

Side grab bars shall be a minimum of 42 inches long, extend 54 inches minimum from the rear wall, and continue past the front edge of the toilet at least 24 inches. (CCR, Section 11B-604.5.1.)

Rear grab bars shall be a minimum of 36 inches long, extend from the centerline of the toilet 12 inches minimum toward the narrow side, and 24 inches minimum toward the wide side. (CCR, Section 11B-604.5.2.) See Figure 39. Rear grab bars are allowed to be 24 inches long, extending 12 inches on each side of the centerline of the toilet, when a recessed fixture is mounted on the rear wall adjacent to the toilet. (CCR, Section 11B-604.5.2. Exception 1.)

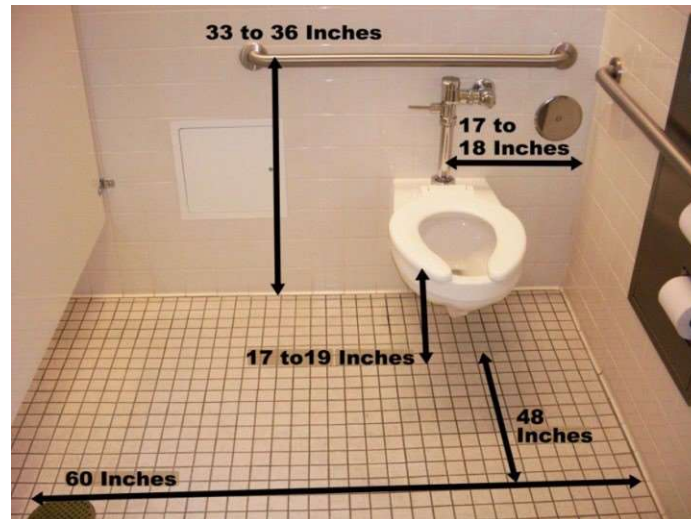


Figure 39: Clear floor space, toilet, and grab bar measurements inside a restroom stall.

Single accommodation restrooms provide at least one toilet and one lavatory/sink. The room may or may not have a partition between the toilet and the lavatory/sink. See Figure 39.

There shall be a clear floor space of at least 60 inches in diameter, or a T-shaped turning space. A door cannot encroach into this turning space by more than 12 inches. (CCR, Section 11B-603.2.3.) Grab bars shall be provided on the sidewall closest to the toilet and on the rear wall behind the toilet in the same manner as required for toilet stalls. (CCR, Section 11B-604.8.1.5.)

The centerline of the toilet shall be 17 to 18 inches from the nearest sidewall or partition. (CCR, Section 11B-604.2.) In front of the toilet there shall be a rectangle clear floor space a minimum of 60 inches wide by 48 inches deep. (CCR, Section 11B-604.3.1.) See Figure 39.

In single accommodation restrooms constructed prior to January 1, 2014, with a fixture next to the toilet, the wide side of the toilet can be as narrow as 28 inches between the toilet and a fixture. If no fixture is adjacent to the toilet the clear space on the wide side of the toilet can be as narrow as 32 inches.