

REPORT OF REGISTRATION

February 19, 2002

REGISTRATION STATISTICS FOR THE 15-DAY REPORTING

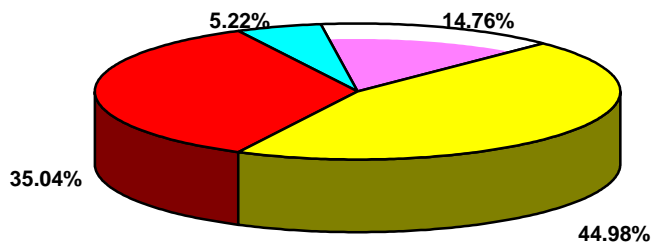
TOTAL VOTER REGISTRATION FOR 15-DAY CLOSE

<u>Year</u>	<u>Eligible Voters</u>	<u>Number Registered</u>	<u>Percent Registration</u>	<u>Type of Election</u>
2002	21,507,390	15,280,808	71.05%	Gubernatorial

REGISTRATION BY POLITICAL PARTY: 15-DAY CLOSE

<u>Year</u>	<u>Dem</u>	<u>Rep</u>	<u>Other</u>	<u>Decline to State</u>	<u>Democratic Counties</u>	<u>Republican Counties</u>
2002	44.98%	35.04%	5.22%	14.76%	21	37

February 19, 2002 Registration Percentages: 15-Day Close



■ Democratic 44.98% ■ Republican 35.04% ■ Other 5.22% ■ Decline to State 14.76%

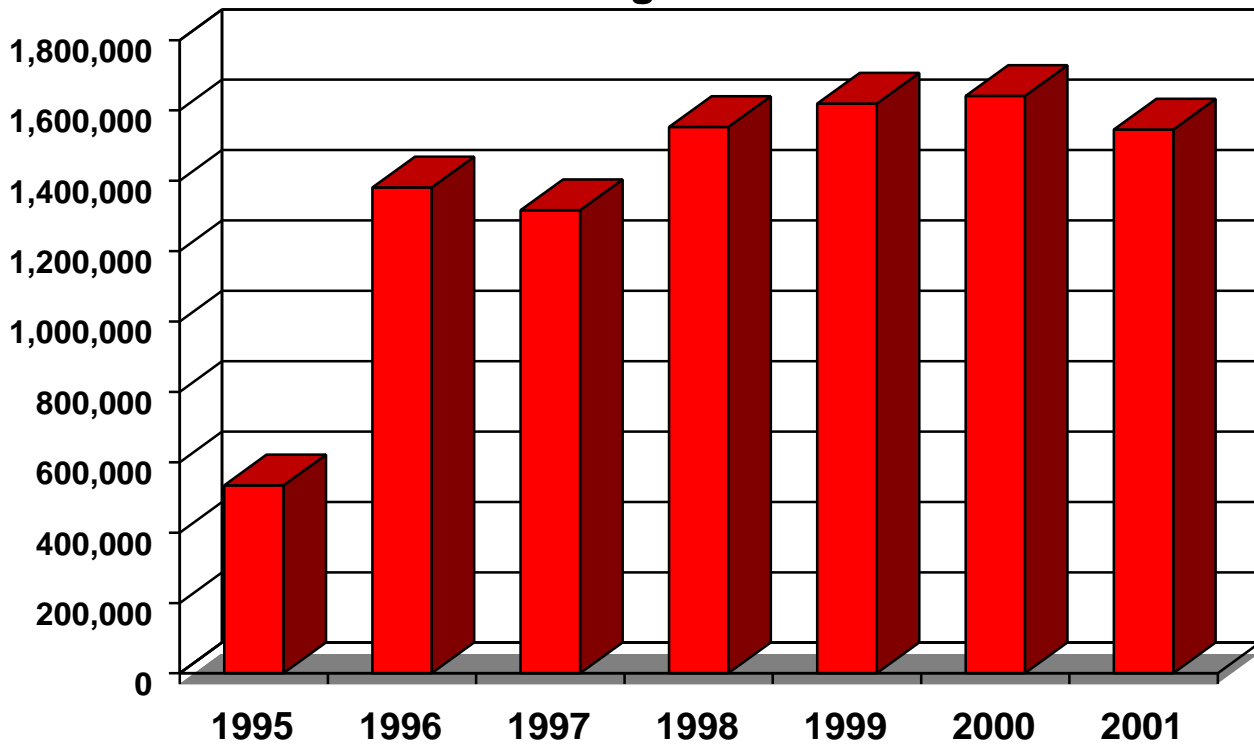
February 19, 2002 Report of Registration

TRENDS:

Since the February 4, 2002 Report of Registration (29-day close):

- the percentage of total registration in the state has increased from 70.87% to 71.05%;
- registration in the qualified political parties has decreased from 84.44% to 84.37%;
- registration in the Democratic party has decreased from 45.09% to 44.98% ;
- registration in the Republican party has increased from 35.01% to 35.04%;
- the number of voters who have declined to state has increased from 14.69% to 14.76% ; and
- since 6/19/95 (when NVRA began), 9,591,827 people have registered or reregistered in conjunction with "Motor Voter"

NVRA Registrations



PARTY REGISTRATION BY COUNTY FOR THE 15-DAY CLOSE:

The top ten Democratic Party, Republican Party and Declined to State counties in terms of registration:

<u>Democratic Party</u>		<u>Republican Party</u>		<u>Declined to State</u>	
Alameda	56.32%	Madera	51.97%	San Francisco	24.32%
San Francisco	55.89%	Placer	50.57%	Alpine	20.87%
Los Angeles	52.72%	Sutter	49.81%	Santa Clara	19.29%
Imperial	52.50%	Orange	49.06%	Mono	18.63%
Santa Cruz	50.74%	Shasta	48.44%	San Mateo	18.00%
Solano	50.66%	Kern	48.08%	Alameda	17.56%
Sonoma	50.51%	Inyo	48.07%	Sierra	17.22%
San Mateo	50.49%	Modoc	47.79%	Marin	17.08%
Marin	50.35%	Riverside	47.60%	San Diego	16.90%
Contra Costa	49.32%	Tulare	47.57%	Lassen	16.33%

The top three American Independent Party, Green Party, Libertarian Party, Natural Law Party, and Reform Party counties in terms of party registration:

<u>American Independent Party</u>		<u>Green Party</u>	
Lassen	4.17%	Humboldt	6.99%
Alpine	3.76%	Mendocino	5.55%
Tehama	3.63%	Santa Cruz	4.86%

<u>Libertarian Party</u>		<u>Natural Law Party</u>	
Calaveras	1.52%	San Diego	0.79%
Sierra	1.39%	Los Angeles	0.54%
Trinity	1.28%	Siskiyou	0.45%

<u>Reform Party</u>	
Alpine	0.85%
San Diego	0.84%
Nevada	0.68%