

# REPORT OF REGISTRATION

January 4, 2002

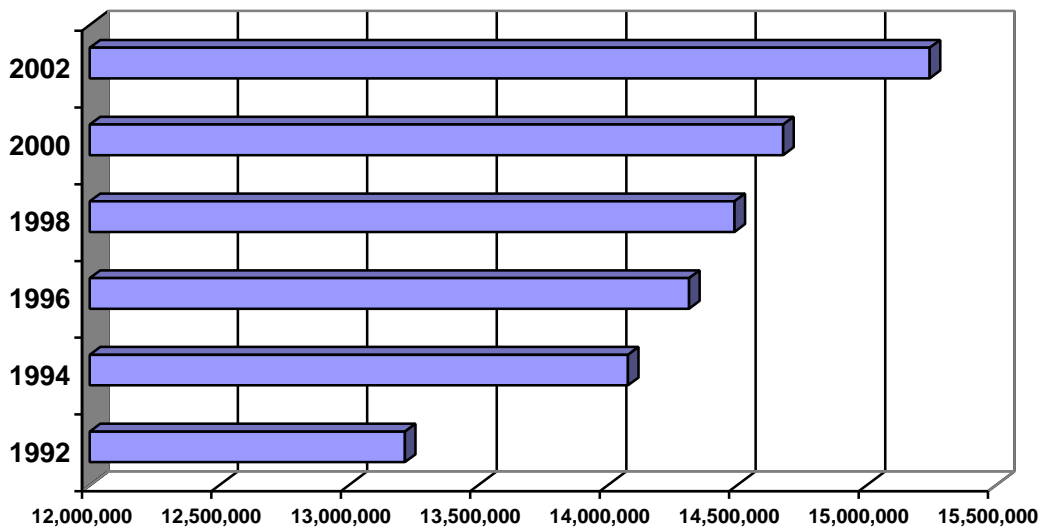
## HISTORICAL REGISTRATION STATISTICS FOR 60-DAY CLOSE

### TOTAL VOTER REGISTRATION

<u>Year</u>	<u>Eligible Voters*</u>	<u>Registered Voters</u>	<u>Percent Registration</u>	<u>Type of Election</u>
2002	21,460,250	15,243,600	71.03%	Gubernatorial
2000	21,190,862	14,676,997	69.26%	Presidential
1998	21,061,868	14,489,546	68.80%	Gubernatorial
1996	19,298,379	14,314,658	74.18%	Presidential
1994	18,946,358	14,078,882	74.31%	Gubernatorial
1992	20,612,814	13,217,022	64.12%	Presidential

\* Revised in 1994, based on US Census data, as adjusted by information from the Department of Finance and the Department of Corrections.

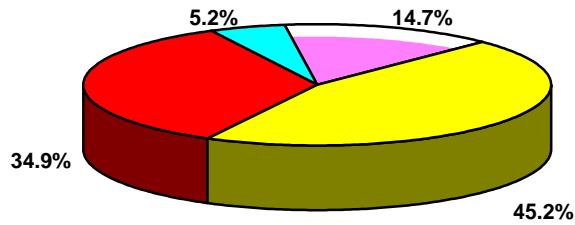
### Historical Registration



## REGISTRATION BY POLITICAL PARTY

<u>Year</u>	<u>Dem</u>	<u>Rep</u>	<u>Other</u>	<u>Declined to State</u>	<u>Democratic Counties</u>	<u>Republican Counties</u>
2002	45.2%	34.9%	5.2%	14.7%	24	34
2000	46.2%	34.9%	5.2%	13.7%	29	29
1998	46.8%	35.9%	5.1%	12.1%	32	26
1996	47.4%	36.8%	5.1%	10.6%	37	21
1994	48.9%	37.1%	3.5%	10.3%	42	16
1992	48.4%	38.9%	3.1%	9.4%	43	15

**January 4, 2002 Registration Percentages**



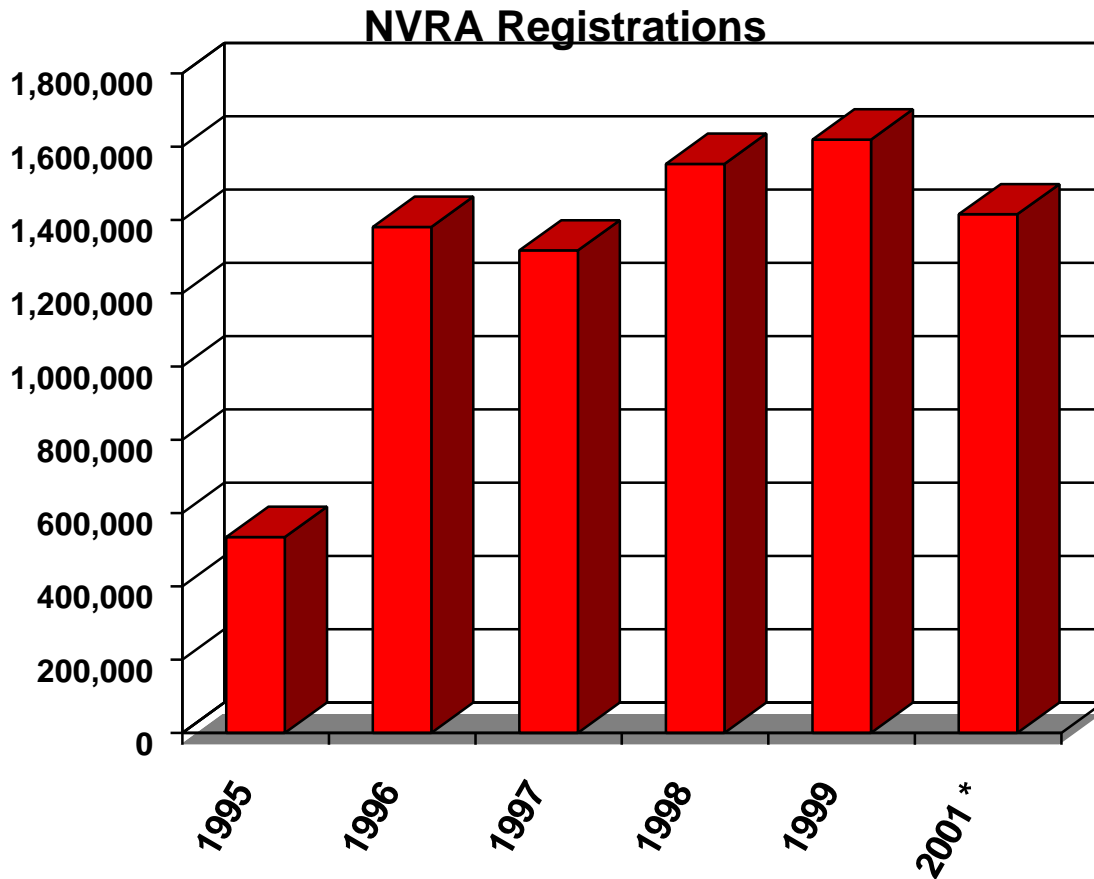
■ Democratic 45.2% 
 ■ Republican 34.9% 
 ■ Other 5.2% 
 ■ Decline to State 14.7%

## January 4, 2002 Report of Registration

### TRENDS:

Since the January 7, 2000 (60-Day) Report of Registration:

- the percentage of total registration in the state has increased from 69.26% to 71.03%;
- registration in the qualified political parties has declined from 85.35%;to 84.49%;
- registration in the Democratic party declined from 46.20%% to 45.20%;
- registration in the Republican party increased from 34.90% to 34.96%;
- the number of voters who have declined to state has increased from 13.70% to 14.70%; and
- since 6/19/95 (when NVRA began), 9,461,396 people have registered or reregistered in conjunction with "Motor Voter"



\* NVRA statistics for Year 2001 reflect totals through November 2001.

## POLITICAL PARTY REGISTRATION BY COUNTY

The top ten Democratic, Republican and Declined to State counties in terms of registration:

<b><u>Democratic</u></b>		<b><u>Republican</u></b>		<b><u>Declined to State</u></b>	
Alameda	56.40%	Madera	51.94%	San Francisco	24.24%
San Francisco	55.84%	Placer	50.24%	Alpine	19.98%
Imperial	53.29%	Sutter	49.63%	Santa Clara	19.12%
Los Angeles	52.84%	Orange	49.08%	Mono	18.52%
Santa Cruz	51.10%	Shasta	48.25%	San Mateo	17.91%
Solano	50.82%	Inyo	47.92%	Alameda	17.43%
San Mateo	50.54%	Kern	47.54%	Marin	17.02%
Sonoma	50.51%	Modoc	47.53%	San Diego	16.80%
Marin	50.36%	Riverside	47.42%	Sierra	16.33%
Contra Costa	49.37%	El Dorado	46.95%	Lassen	16.09%

The top three American Independent, Green, Libertarian, Natural Law, and Reform counties in terms of party registration:

<b><u>American Independent</u></b>		<b><u>Green</u></b>	
Lassen	4.27%	Humboldt	6.67%
Alpine	3.78%	Mendocino	5.53%
Tehama	3.62%	Santa Cruz	4.62%
<b><u>Libertarian</u></b>		<b><u>Natural Law</u></b>	
Calaveras	1.52%	San Diego	.81%
Sierra	1.41%	Los Angeles	.54%
Trinity	1.24%	Siskiyou	.47%
<b><u>Reform</u></b>			
San Diego	.85%		
Alpine	.73%		
Nevada	.71%		