

REPORT OF REGISTRATION

February 10, 2001

HISTORICAL REGISTRATION STATISTICS

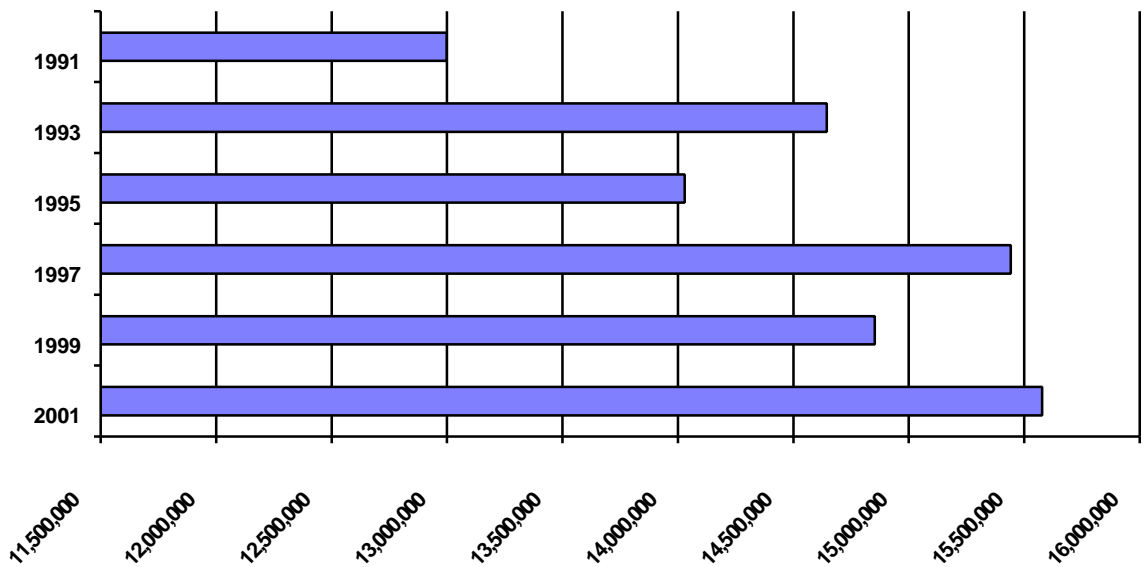
February 10, 2001

VOTER REGISTRATION – FEBRUARY 10, 2001 CLOSE

<u>Year</u>	<u>Number Eligibles*</u>	<u>Number Registered</u>	<u>Percent Registration</u>
2001	21,580,069	15,577,686	72.19%
1999	21,055,042	14,853,121	70.54%
1997	19,639,960	15,441,317	78.62%
1995	18,946,358	14,029,408	74.05%
1993	20,863,687	14,643,987	70.19%
1991	19,339,337	12,997,925	67.21%

* Revised in 1994, based on US Census data, as adjusted by information from the Department of Finance

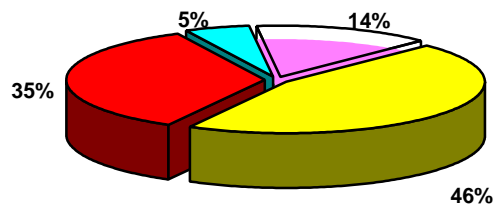
Historical Registration Totals -- February 10, 2001 Close



**REGISTRATION BY POLITICAL PARTY – FEBRUARY 10, 2001
CLOSE**

<u>Year</u>	<u>Dem</u>	<u>Rep</u>	<u>Other</u>	<u>Decline to State</u>	<u>Democratic Counties</u>	<u>Republican Counties</u>
2001	45.6%	34.8%	4.4%	14.4	26	32
1999	46.7%	35.3%	5.2%	12.9%	30	28
1997	47.1%	36.4%	5.0%	11.4%	33	25
1995	49.1%	37.3%	3.4%	10.2%	38	20
1993	46.5%	39.6%	3.8%	10.1%	45	13
1991	49.5%	39.3%	2.2%	9.0%	43	15

**REGISTRATION PERCENTAGE -- FEBRUARY 10, 2001
CLOSE**



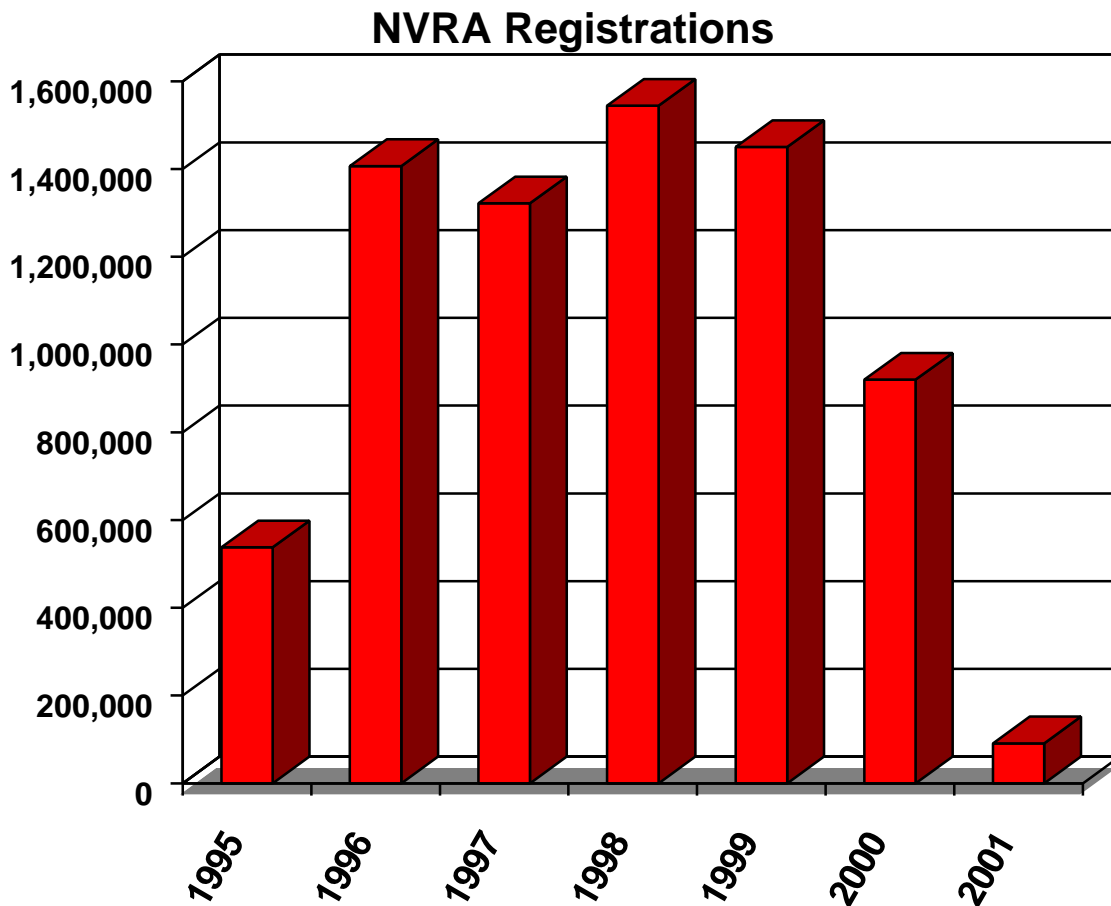
■ Democratic
 ■ Republican
 ■ Other
 ■ Decline to State

REPORT OF REGISTRATION – FEBRUARY 10, 2001 CLOSE

TRENDS:

Since the February 10, 1999, Report of Registration:

- the percentage of total registration in the state increased from 70.54% to 72.19%;
- registration in the qualified political parties declined from 85.60% to 84.71%;
- registration in the Democratic party declined 46.72% to 45.57%;
- registration in the Republican party declined 35.27% to 34.76%;
- the number of voters who have declined to state increased from 12.89% to 14.43%;
- the registration total for the state increased from 14,853,121 to 15,577,686;
- since 6/19/95 (when NVRA began) through February 2001, 8,203,098 people have registered or reregistered in conjunction with "Motor Voter"



POLITICAL PARTY REGISTRATION BY COUNTY February 10, 2001 Close

The top ten Democratic, Republican and Declined to State counties in terms of party registration:

<u>Democratic</u>		<u>Republican</u>		<u>Declined to State</u>	
Alameda	56.64%	Sutter	49.67%	San Francisco	23.70%
San Francisco	56.28%	Orange	49.38%	Santa Clara	18.88%
Los Angeles	53.16%	Placer	49.16%	Mono	18.54%
Imperial	53.14%	Inyo	48.24%	Alpine	18.48%
Solano	51.46%	Shasta	47.93%	San Mateo	17.59%
Santa Cruz	51.21%	Kern	47.52%	Alameda	17.12%
Merced	51.08%	Modoc	47.07%	Marin	17.01%
Sonoma	50.62%	Madera	46.90%	San Diego	16.54%
San Mateo	50.62%	Riverside	46.76%	Santa Cruz	16.19%

The top three American Independent, Green, Libertarian, Natural Law and Reform counties in terms of party registration:

<u>American Independent</u>		<u>Green</u>	
Lassen	4.19%	Humboldt	6.70%
Yuba	3.59%	Mendocino	5.29%
Tehama	3.56%	Santa Cruz	4.72%

<u>Libertarian</u>		<u>Natural Law</u>	
Sierra	1.60%	San Diego	0.86%
Calaveras	1.45%	Los Angeles	0.57%
Trinity	1.18%	Alameda	0.37%

<u>Reform</u>	
San Diego	0.91%
Alpine	0.80%
Nevada	0.79%