

REPORT OF 1% MANUAL TALLY

[Elections Code section 15360]

County: Sonoma County

Election: November 4, 2025, Statewide Special Election

RECEIVED
California Secretary of State
Elections Division
DEC 04 2025

Manual tally method used: ☐ One Part [section 15360(a)(1)]

☒ Two Part [section 15360(a)(2)]

Date and time notice provided (attach copy of the notice):

11-3-25, at about 3:00 pm

Internet website where additional information about the manual tally is posted, if applicable:

N/A

Date and time the manual tally commenced, beginning with the random selection of precincts and batches (must be after the close of the polls on Election Day):

11-12-25 at 9:00AM

Date and time the manual tally finished:

11-12-25 at 3:30PM

Estimated number of members of the public who observed the process:

2

Total number of ballots counted in this election (official canvass numbers):

Polling place / vote center ballots (including provisionals)	11,053
Vote-by-mail ballots	198,450

Total number of ballots manually tallied:

Polling place / vote center ballots (including provisionals)	265
Vote-by-mail ballots	1,229

Precincts in the county for this election (attach list describing all precincts with the number of ballots in each, indicating whether ballots are polling place / vote center, vote-by-mail, or provisional):

Total number of precincts in the election	390 voting precincts
Total number of precincts selected for the manual tally	9 full-count, 17 cleanup batches

Batches of vote-by-mail or provisional ballots (attach list describing each batch with the number of ballots in each, indicating whether ballots are polling place / vote center, vote-by-mail, or provisional):

Total number of batches in the election	832 batches through Election Night
Total number of batches selected for the manual tally	9 full-count batches, and 17 cleanup batches

Method used to choose precincts and batch of ballots to manually tally (include description of random selection method):

In preparation for the manual tally, on 11-7-25, our Program Development Manager listed all the Vote Center and Vote by Mail batches of ballots in an Excel spreadsheet. On 11-10-25, our Administrative Aide sorted the Vote by Mail batches from the Vote Center batches, and an Election Specialist II confirmed the categories were sorted correctly and we had the correct number of batches. The two groups of batches were printed on perforated cardstock, and three staff members, broke all the cards into 832 business card-sized cards. Each card had one batch printed on it and was folded in half. All the Vote by Mail batch cards were placed in a metal ballot box, and all the Vote Center batch cards went into a teal ballot box. At 9am, on 11-12-25, various staff, managers, and two observers took turns reaching into each box to draw random batches for full count tallies, followed by numerous clean-up batches.

There were a total of 694 Vote by Mail batches. Seven full-count batches were drawn which exceeded the 1% requirement. Ten more batches were drawn in case not all contests were covered. However, all contests were covered in the first Seven full-count tallies.

Vote Centers had a total of 138 batches, so the two full-count batches drawn exceeded the 1% requirement. Six more batches were drawn in case not all contests were covered. When the two full-count Vote Center batches had been tallied, The Timber Cove County Water District contest had not yet been covered. One at a time, the tally team opened each cleanup batch and looked at every ballot page to try to find that last contest. None of the six cleanup batches contained the Timber Cove Contest. Our Elections Manager and Program Development Manager worked together and found there was only one Vote Center batch that contained a ballot with the last contest. They located that batch for the tally team, and the tally team then was able to cover all the contests for the Vote Centers.

Description of any discrepancies noted (include details about each discrepancy and how each was resolved; also include anything unusual observed during the manual tally process or anything that may improve the manual tally process):

Vote by Mail Batches (VBM)

There was ONE discrepancy between the manually tallied votes and the scanner counts for batch 43 (scanner 5, from 10-20-25). On Measure I, the tally team counted 16 No votes and no undervotes, while the scanner counted 15 No votes and one undervote. The tally team knew exactly which ballot to re-examine, because they had already flagged it with a sticky-note. (see photo next page)

RECEIVED
California Secretary of State
Elections Division
DEC 04 2020

Total number of batches selected for the manual tally: 26

Batches of Ballots:

Vote by Mail Batches					
#	Batch	Scanner	Date Scanned	# of cards	
1	27	2	10-31-25	144	Full Count
2	6	3	10-17-25	163	Full Count
3	95	6	10-23-25	274	Full Count
4	11	2	10-17-25	70	Full Count
5	99	3	10-31-25	207	Full Count
6	43	5	10-20-25	210	Full Count
7	71	3	10-27-25	161	Full Count
8	19	2	10-17-25	166	Clean-up batch, not needed
9	32	5	10-20-25	188	Clean-up batch, not needed
10	1	1	10-16-25	69	Clean-up batch, not needed
11	151	6	10-27-25	159	Clean-up batch, not needed
12	81	5	10-21-25	164	Clean-up batch, not needed
13	203	6	10-31-25	246	Clean-up batch, not needed
14	45	6	10-20-25	69	Clean-up batch, not needed
15	244	5	11-4-25	206	Clean-up batch, not needed
16	91	6	10-23-25	264	Clean-up batch, not needed
17	56	6	10-21-25	160	Clean-up batch, not needed

Vote Center Batches					
#	Batch	Scanner	Date Scanned	# of cards	
1	20, Healdsburg Community Center	7	10-28-25	10	Full Count
2	3, Rohnert Park Senior Center	8	11-04-25	254	Full Count
3	9, Registrar of Voters Office	7	10-27-25	3	Clean-up batch
4	28, Santa Rosa Veterans Memorial Building	7	10-29-25	26	Clean-up batch
5	1, Santa Rosa Veterans Memorial Building	9	11-04-25	201	Clean-up batch
6	2, Rohnert Park Community Center	7	10-27-25	20	Clean-up batch
7	60, Santa Rosa Veterans Memorial Building	7	11-03-25	27	Clean-up batch
8	11, Petaluma City Hall	12	11-04-25	218	Clean-up batch
9	90, Sebastopol Center for the Arts	7	11-04-25	56	Clean-up batch

RECEIVED
California Secretary of State
Elections Division
DEC 04 2025

<p>oulers statewide to update election materials to reflect new congressional district maps.</p> <p>50. AUTORIZA CAMBIOS TEMPORALES EN MAPAS DE DISTRITOS CONGRESIONALES EN RESPUESTA A LA REDISTRIBUCIÓN DE DISTRITOS PARTIDISTA DE TEXAS. ENMIENDA CONSTITUCIONAL LEGISLATIVA. Requiere el uso temporal de nuevos mapas de distritos congresionales hasta 2030. Ordena a la Comisión Ciudadana Independiente de Redistribución de Distritos a reanudar la elaboración de mapas de distritos congresionales en 2031. Establece una política en apoyo a las comisiones no partidistas de redistribución de distritos a nivel nacional.</p> <p>Impacto Fiscal: Costos que se realizan una vez en los condados, de hasta algunos millones de dólares a nivel estatal para actualizar los materiales electorales para reflejar los nuevos mapas de los distritos congresionales.</p> <p><input checked="" type="radio"/> YES / SI <input type="radio"/> NO / NO</p>	<p>salaries and independent citizen oversight?</p> <p>Medida de Excelencia Educativa del Distrito Unido y Conjunto de Escuelas Secundarias de Palatuma. Para proporcionar financiamiento controlado localmente para las escuelas preparatorias/ secundarias locales que no pueden eliminado por el estado para alentar retener a excelentes estudiantes, mejorar las matemáticas, las ciencias, la lingüística, los programas de escritura, mantener clases pequeñas y preparar a los estudiantes para la universidad, carreras profesionales. Se adopta la medida del Distrito y Conjunto de Escuelas Secundarias de Palatuma que crea un fondo sobre la per cápita educativa de \$120, reduciendo \$3,020,000 anualmente durante 8 años, con exenciones a los apellidos mayores, sin fondos para los salarios de los administradores. Con salarios de ciudadanos independientes.</p> <p><input type="radio"/> YES / SI <input checked="" type="radio"/> NO / NO</p>
--	---

All tally team members and the team leader agreed that the person had intended to fill in the oval for "No," but had instead colored over the word "No," missing the oval entirely. The Chief Deputy of the Registrar of Voters also examined the ballot and agreed that the voter had intended to mark No. The tally team then enhanced the oval with a light blue highlighter, and asked the managers to rescan the whole batch. Upon rescanning on scanner 5, batch 43 was renamed batch 272. The tally team count of the batch then matched that of the scanner.

Vote Center Batches (VC)

There were NO discrepancies between the manually tallied votes and the scanner counts.

To improve future Manual Tallies: The only discrepancy occurred because the staff removing the ballot from the envelope did not notice that one of the voter's marks had missed the target oval entirely. We will remind staff to take their time while looking over the ballots for potential scanning problems.

This report is submitted pursuant to Elections Code section 15360(f).

Submitted on this date: 12-3-2025 by:

Elections Official Name: Wendy Hudson
Chief Deputy ROV

Signature: [Signature]

EMAIL Form

RECEIVED
California Secretary of State
Elections Division
DEC 04 2025

SONOMA COUNTY REGISTRAR OF VOTERS

435 FISCAL DRIVE
SANTA ROSA, CA 95403



RECEIVED
California Secretary of State
Elections Division

DEC 04 2025



PUBLIC NOTICE OF 1% MANUAL TALLY FOR THE NOVEMBER 4, 2025, STATEWIDE SPECIAL ELECTION

The Sonoma County Registrar of Voters Office will randomly draw batches of ballots to be hand tallied as a check of the ballot counting equipment on Wednesday, November 12, 2025, at 9am at the Registrar of Voters Office, 435 Fiscal Dr., Santa Rosa.

One percent of Vote Center batches, and one percent of Vote by Mail batches, will be randomly selected. In addition, for each race not included in the initial group of randomly selected batches, an additional batch shall be counted. The tally of the additional batch shall apply only to the races not previously counted.

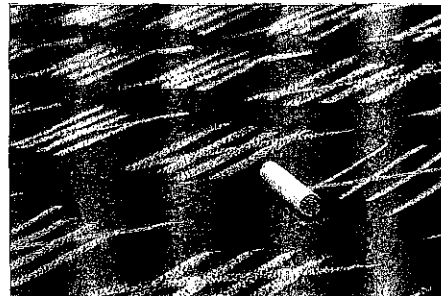
The manual tally will begin shortly after the drawing of the batches, and continue daily on weekdays (excluding holidays) at the same location, from 8am until 5pm, except for breaks and lunch hours, unless otherwise posted. Observers are welcome to observe the tally.



REGISTRO DE VOTANTES DEL CONDADO DE SONOMA

435 FISCAL DRIVE
SANTA ROSA, CA 95403

AVISO PÚBLICO DEL RECuento MANUAL DEL 1% PARA LA ELECCIÓN ESPECIAL ESTATAL DEL 4 DE NOVIEMBRE DE 2025



La Oficina del Registro de Votantes del Condado de Sonoma sorteará al azar lotes de boletas para ser contadas a mano como verificación del equipo de conteo de boletas el miércoles, 12 de Noviembre de 2025, a las 9am en la Oficina del Registro de Votantes, 435 Fiscal Dr., Santa Rosa.

El uno por ciento de los lotes de Centros de Votación y el uno por ciento de los lotes de Voto por Correo se seleccionarán al azar. Además, por cada contienda no incluida en el grupo inicial de lotes seleccionados al azar, se contabilizará un lote adicional. El conteo del lote adicional se aplicará únicamente a las contiendas no contadas previamente.

El recuento manual comenzará poco después del sorteo de los lotes y continuará diariamente en días de la semana (excluyendo los días festivos) en el mismo lugar, desde las 8am hasta las 5pm, excepto durante los descansos y las horas del almuerzo, a menos que se indique lo contrario. Los observadores son bienvenidos a observar el conteo.