

## Doorways, Hallways and Entrances

Complete a "Doors, Hallways and Entrances" checklist for every door required to enter the voting area.

Door description and/or location:

### Doorways

Questions	Yes	No	N/A	As Built	Modifications/ Notes
1. Are doors provided along the path to the voting area?					
2. Is there 32 inches of clear width at the door when the single door is open to 90 degrees? (If automatic doors are present, the clear opening must be at least 32 inches.)					
3. If double doors, is there at least 32 inches of clear width on one door?					
4. Is the door threshold no more than ½ inch high?					
5. Is the door threshold beveled between ¼ inch and ½ inch?					
6. Is the door hardware usable with one hand, not requiring tight grasping, pinching, or twisting of the wrist?					
7. Is the operable part of the door hardware mounted between 34 inches and 44 inches above the floor?					

Questions	Yes	No	N/A	As Built	Modifications/ Notes
8. Is there a smooth uninterrupted surface a minimum of 10 inches high, measured from the floor on the push side of the door? (Do not include button activated or automatic doors.)					
9. Is the force required to open the door 5 lb or less?					
10. Is the force required to activate the door hardware 5 lb or less?					
11. On the pull side of the door, is the door landing 32 inches wide and at least 60 inches deep perpendicular to the door?					
12. Is the pull side landing level with no more than 2.08% slope in any direction?					
13. Is there at least 18 inches of strike-side clear space on the pull side of an interior door?					
14. Is there at least 24 inches of strike side clear space on the pull side of an exterior door?					
15. On the push side of the door, is the door landing 32 inches wide and at least 48 inches deep perpendicular to the door?					
16. Is the push side landing level with no more than 2.08% slope in any direction?					
17. If the door has a latch and closer, is there at least 12 inches of strike-side clear space on the push side of the door?					
18. If there are doors in a series, is the distance between the two hinged doors at least 48 inches plus the width of the door swinging into the space?					

**Modifying measures needed at this site on Election Day:**

- Prop door open
- Threshold ramps needed,  
    \_\_\_\_\_ Ramps needed
- Accessible modifications needed for door hardware
  - \_\_\_\_\_ Grips needed
  - \_\_\_\_\_ Other needed
- Other: \_\_\_\_\_

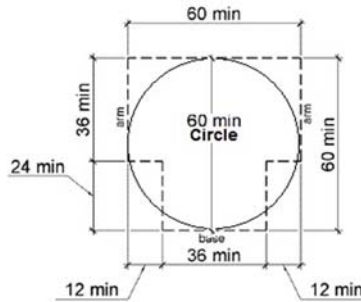
Comments:

## Hallways

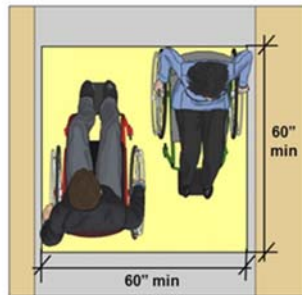
Questions	Yes	No	N/A	As Built	Modifications/ Notes
1. Is there an accessible route from the entrance to the voting area that is free of steps?					
2. Does the route have a cross slope that is 2.08% or less?					
3. Are abrupt changes in level from ¼ inch to ½ inch high beveled?					
4. Do changes in level more than ½ inch high have a 5% or lower slope?  (If the slope is higher than 5%, survey the change in level using the Ramp checklist.)					
5. Do all interior hallways on the accessible route have a stable, firm, and slip-resistant surface?					
6. Are hallways and corridors from the main entrance to the voting area entrance at least 44 inches wide, including the presumed route to the registration table(s) and voting station(s)?					
7. In 44 inch wide hallways, are there passing spaces 60 inches by 60 inches or "T" intersections placed not more than 200 feet apart? (See Figure)					

Questions	Yes	No	N/A	As Built	Modifications/ Notes
8. If there are overhead obstacles lower than 80 inches above the floor along the route, are there cane detectable barriers to prevent someone from walking underneath?					
9. Do all objects mounted on walls from 27 inches to 80 inches high protrude 4 inches or less into the route? (Handrails are permitted to protrude a maximum of 4 1/2 inch.)					
10. Do all objects, mounted on poles from 27 inches to 80 inches high protrude 12 inches or less into the route?					
11. If modifications are needed at the site, list them out in the Modification/Notes column, or in the Comment box below. Modifications include but are not limited to: temporary ramps, mats to cover grates, directional signage (left and/or right pointing), cones, relocation of items.					

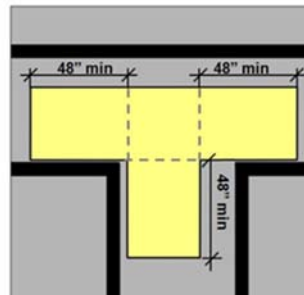
## Passing Space and T Intersections



Passing space is required every 200 feet and must be provided as a 60" by 60" minimum space or as T-shaped space where each stem is at least 48" long.



60" Minimum by 60" Minimum Passing Space



T-Shaped Passing Space

### Modifying measures needed at this site on Election Day:

Non-slip mats needed

\_\_\_ # of Mats needed

Cones or other detectable barriers needed

\_\_\_ Cones or other detectable barriers needed

Threshold ramps needed for small change in level

\_\_\_ Ramps needed

Relocate movable objects out of accessible path of travel

Other \_\_\_\_\_

Comments: