

## Section 4: Voting Area

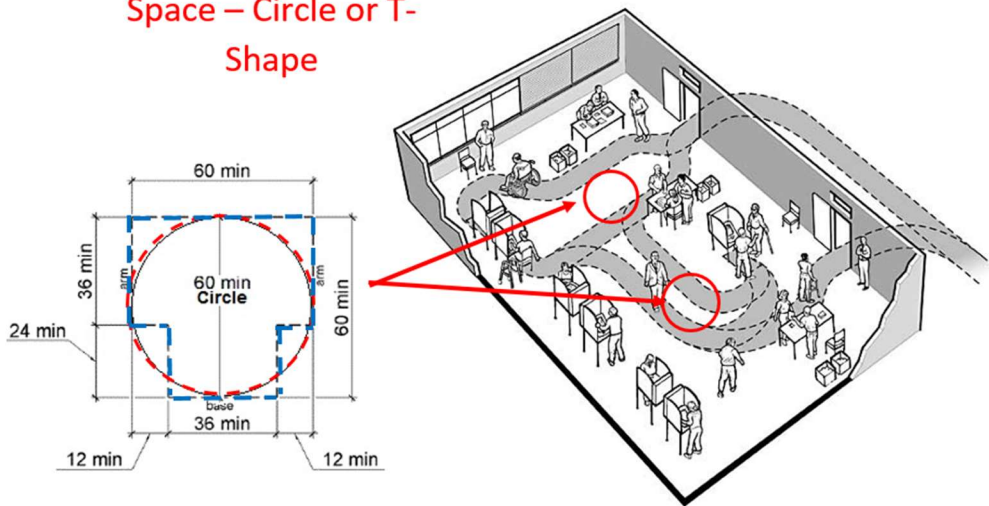
Questions	Yes	No	N/A	Dimension (As-Built)	Modifications/ Notes
1. Are hallways and corridors in the voting area at least 44 inches wide on the presumed route from the entrance/exit to the registration table(s) and voting station(s)?					
2. Is there a stable, firm, and slip-resistant route inside the voting area?					
3. Do all objects mounted on walls from 27 inches to 80 inches high protrude 4 inches or less into the route? (Handrails are permitted to protrude a maximum of 4 ½ inches.)				Protrusion depth:  Bottom edge height:	
4. Do all objects mounted on poles from 27 inches to 80 inches high protrude 12 inches or less into the route?				Protrusion depth:  Bottom edge height:	
5. If there are overhead obstacles lower than 80 inches above the floor along the route, are there cane-detectable barriers to prevent someone from walking underneath?				Height:	
6. Is there a clear floor space 60 inches in diameter or a T-shaped space presumed available after the voting area is set up to turn around and maneuver a wheelchair? (See Figure)				Diameter:  Distance between spaces:	

Questions	Yes	No	N/A	Dimension (As-Built)	Modifications/ Notes
7. Is there a clear floor space 60 inches in diameter or a T-shaped space presumed available in front of at least one voting station and accessible voting machine? (See Figure)					
8. In the event of an emergency, do all emergency marked doors have accessible hardware that does not require tight grasping, pinching, or twisting of the wrist?				Pull side hardware:  Push side hardware:	
9. Do the alarms have both visual and audible alerts when activated?					
10. Do all portions of the presumed route in the voting area have a maximum cross-slope of 2.08 percent and a maximum running slope of 5 percent?  (If the running slope is greater than 5%, complete a ramp checklist.)				Max slope:	
11. If there are any abrupt changes in level from 1/4 inch to 1/2 inch high on the presumed route in the voting area, are those changes in level beveled?				Level height:  Bevel height:	

Questions	Yes	No	N/A	Dimension (As-Built)	Modifications/ Notes
<p>12. If there are changes in level higher than 1/2 inch on the presumed route in the voting area, are the changes in level ramped?</p> <p>(If yes, complete a ramp checklist.)</p>					

### Turning Space Figure

Example of Turning Space – Circle or T-Shape



An accessible route connects the building entrance with the voting area, including voter check-in and voting stations

**Modifying measures needed at this site on Election Day:**

Does the voting area have adequate lighting for voting purposes?

Cones or other detectable barriers needed

\_\_\_\_\_ Cones or other detectable barriers needed

Need to modify hazards

Distance from wall \_\_\_\_\_

Movable items \_\_\_\_\_

Mats to cover electrical cords \_\_\_\_\_

Other \_\_\_\_\_

Comments: