

Voting Area

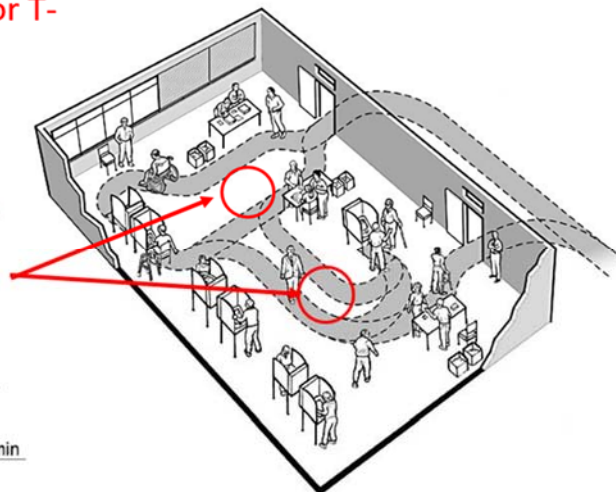
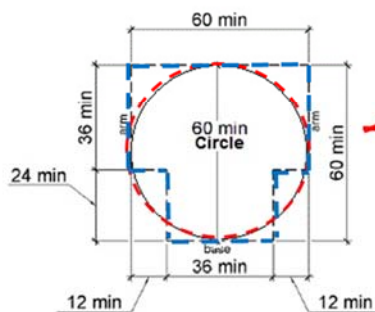
Questions	Yes	No	N/A	As Built	Modifications/ Notes
1. Are hallways and corridors in the voting area at least 44 inches wide on the presumed path from the entrance/exit to registration table(s) and voting station(s)?					
2. Is there a stable, firm and slip-resistant route inside the voting area?					
3. Do all objects mounted on walls from 27 inches to 80 inches high protrude 4 inches or less into the path? (Handrails are exempt and protrude a maximum of 4 ½ inches.)					
4. Do all objects, mounted on poles from 27 inches to 80 inches high protrude 12 inches or less into the path?					
5. If there are overhead obstacles lower than 80 inches above the floor along the path, are there cane detectable barriers to prevent someone from walking underneath?					
6. Is there a clear floor space 60 inches in diameter or a T-shaped space presumed available after voting area is set up to turn around and maneuver a wheelchair? (See Figure)					

Questions	Yes	No	N/A	As Built	Modifications/ Notes
7. Is there a clear floor space 60 inches in diameter or a T-shaped space presumed available in front of at least one voting station and accessible voting machine? (See Figure)					
8. In the event of an emergency, do all emergency marked doors have accessible hardware that does not require tight grasping, pinching, or twisting of the wrist?					
9. Do the alarms have both visual and audible alerts when activated?					
10. Do all portions of the presumed route in the voting area have a cross-slope that is 2.08% or less?					
11. If there are any abrupt changes in level from 1/4 inch to 1/2 inch high on the presumed route in the voting area, are those changes in level beveled?					

Questions	Yes	No	N/A	As Built	Modifications/ Notes
<p>12. If there are changes in level higher than 1/2 inch on the presumed route in the voting area, do those changes in level have a 5% or lower slope?</p> <p>(If the slope is more than 5%, survey the change in level using the Ramp checklist.)</p>					
<p>13. If modifications are needed at the site, list them out in the Modification/Notes column, or in the Comment box below. Modifications include but are not limited to: temporary ramps, mats to cover grates, directional signage (left and/or right pointing), cones, relocation of items.</p>					

Turning Space Figure

Example of Turning Space – Circle or T-Shape



An accessible route connects the building entrance with the voting area, including voter check-in and voting stations

Modifying measures needed at this site on Election Day:

Does the voting area have adequate lighting for voting purposes?

Cones or other detectable barriers needed

_____ Cones or other detectable barriers needed

Need to modify hazards

Distance from wall _____

Movable items _____

Mats to cover electrical cords _____

Other _____

Comments: