

123-DAY REPORT OF REGISTRATION

July 3, 2020, for the November 3, 2020, General Election

HISTORICAL VOTER REGISTRATION STATISTICS FOR 123-DAY/154-DAY REPORTS¹ FOR PRESIDENTIAL ELECTION YEARS

TOTAL VOTER REGISTRATION

<u>Report Date</u>	<u>Eligible Voters²</u>	<u>Registered Voters</u>	<u>Percent</u>
July 3, 2020	25,060,169	20,921,513	83.49%
July 7, 2016	24,810,222	18,084,999	72.89%
January 5, 2016	24,584,491	17,259,413	70.20%
January 3, 2012	23,645,811	17,028,290	72.01%
January 1, 2008 ³	22,927,832	15,537,046	67.77%
September 4, 2007 ³	22,911,664	15,527,076	67.77%

¹This 123-Day Report of Registration for a presidential general election is the second report of its kind; therefore, its data is being compared to the first 124-Day Report of Registration on July 7, 2016, and the 154-Day Reports of Registration for prior presidential years.

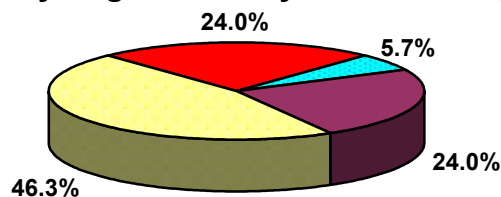
²The figures given are unofficial but are based on U.S. Census data, as adjusted by information from the California Department of Finance and the California Department of Corrections and Rehabilitation.

³The presidential and statewide direct primaries were split in 2008. The presidential primary election was held on February 5, and the statewide direct primary election was held on June 3. Therefore, by law, two 154-day reports were published.

REGISTRATION BY POLITICAL PARTY

<u>Report Date</u>	<u>Democratic</u>	<u>Republican</u>	<u>No Party Preference</u>	<u>Other</u>
July 3, 2020	9,691,855 46.3%	5,018,332 24.0%	5,028,910 24.0%	1,182,416 5.7%
July 7, 2016	8,155,831 45.1%	4,898,389 27.1%	4,212,484 23.3%	818,295 4.5%
January 5, 2016	7,438,655 43.1%	4,767,259 27.6%	4,141,860 24.0%	911,639 5.3%
January 3, 2012	7,429,684 43.6%	5,170,592 30.4%	3,617,466 21.2%	810,548 4.8%
January 1, 2008	6,636,067 42.7%	5,197,897 33.5%	3,011,371 19.4%	691,711 4.4%
September 4, 2007	6,599,660 42.5%	5,254,795 33.8%	2,980,622 19.2%	691,999 4.5%

123-Day Registration by Political Party



■ Democratic 46.3%

■ Republican 24.0%

■ Other 5.7%

■ No Party Preference 24.0%

123-DAY REPORT OF REGISTRATION

July 3, 2020, for the November 3, 2020, General Election

TRENDS

Since the last 124-Day Report of Registration¹ for a general in a presidential election year (July 7, 2016):

- The total voter registration in the state increased from 18,084,999 to 20,921,513.
- The percentage of eligible Californians who are registered to vote increased from 72.9% to 83.5%.
- The percentage of voters who have no party preference increased from 23.3% to 24.0%.
- The percentage of voters registered with a qualified political party decreased from 76.2% to 74.9%.
- The percentage of voters registered with the Democratic Party increased from 45.1% to 46.3%.
- The percentage of voters registered with the Republican Party decreased from 27.1% to 24.0%.

POLITICAL PARTY REGISTRATION HIGHLIGHTS

The counties with the 10 highest percentages of Democratic Party, Republican Party, and No Party Preference registered voters are:

<u>Democratic Party</u>		<u>Republican Party</u>		<u>No Party Preference</u>	
San Francisco	62.61%	Modoc	54.46%	Santa Clara	29.92%
Marin	59.93%	Lassen	54.21%	San Francisco	27.03%
Alameda	59.54%	Shasta	49.35%	San Mateo	26.49%
Santa Cruz	59.04%	Amador	46.47%	Imperial	26.48%
Sonoma	56.19%	Tehama	46.30%	San Diego	26.31%
San Mateo	54.38%	Mariposa	45.67%	Alameda	25.46%
Los Angeles	52.55%	Calaveras	45.22%	Mono	25.18%
Contra Costa	52.52%	Plumas	44.60%	Los Angeles	25.03%
Monterey	51.80%	Glenn	44.40%	Lake	24.48%
Yolo	51.07%	Tuolumne	43.94%	Orange	24.21%

The counties with the three highest percentages of American Independent Party, Green Party, Libertarian Party, and Peace and Freedom Party registered voters are:

<u>American Independent Party</u>		<u>Green Party</u>	
Sierra	5.91%	Humboldt	1.58%
Lassen	5.59%	Mendocino	1.58%
Modoc	5.03%	Trinity	0.98%

<u>Libertarian Party</u>		<u>Peace and Freedom Party</u>	
Placer	1.69%	Imperial	0.71%
El Dorado	1.58%	Trinity	0.62%
Calaveras	1.56%	Del Norte	0.62%

¹Elections Code section 2187(c)(4) was amended in 2019 to replace the 124-Day Report of Registration with the 123-Day Report of Registration.

COUNTY REGISTRATION HIGHLIGHTS

Largest County Increase in Registration Since the July 7, 2016, Report

County	Increase in Registration
Los Angeles	642,047
San Diego	299,320
San Bernardino	236,352
Orange	228,673
Riverside	207,695

Largest Increase in Registration by Percentage Since the July 7, 2016, Report

County	% Increase in Registration	# Increase in Registration
Tulare	30.96%	(+43,777)
San Bernardino	29.38%	(+236,352)
San Benito	26.92%	(+7,018)
Imperial	25.01%	(+15,817)
Riverside	22.59%	(+207,695)

PRE-REGISTRATION HIGHLIGHTS

Current Count of Pre-Registered Voters¹

Total	Democratic	Republican	No Party Preference	Other
128,373	57,051 44.44%	19,676 15.33%	41,934 32.67%	9,712 7.57%

Historical Pre-Registrations Totals²

Date	Pre-Registered Voters to Date
July 3, 2020	564,316
February 18, 2020	530,631
January 3, 2020	490,827
October 1, 2019	437,702
February 10, 2019	316,798
October 22, 2018	260,077
September 7, 2018	189,094
May 21, 2018	132,529
April 6, 2018	105,053
January 2, 2018	79,325
September 26, 2016	0

¹Since September 26, 2016, 16- and 17-year-olds can pre-register to vote. Once they turn 18, they become automatically registered. Pre-registered voters may be activated before their 18th birthday if they will be 18 in an upcoming election. Those pre-registered voters were not eliminated from pre-registration statistics since they remain pre-registrants until their 18th birthday. Therefore, some voters are counted in both pre-registration and active registration statistics.

²Historical pre-registration totals show how many people pre-registered to vote since pre-registration began on September 26, 2016, including pre-registered voters who have since turned 18 and have become active voters.