

**REPORT OF REGISTRATION
JANUARY 3, 2006**

**HISTORICAL REGISTRATION STATISTICS FOR 154-DAY CLOSE
GUBERNATORIAL PRIMARY ELECTIONS**

TOTAL VOTER REGISTRATION

<u>Year</u>	<u>Eligible Voters</u> ¹	<u>Registered Voters</u>	<u>Percent Registration</u>
2006	22,550,376	15,810,412	70.11%
2001 ²	21,364,576	15,336,856	71.79%
1998	20,531,825	14,574,407	70.98%
1994	18,946,358	14,473,590	76.39%
1990	19,040,884	13,423,820	70.50%

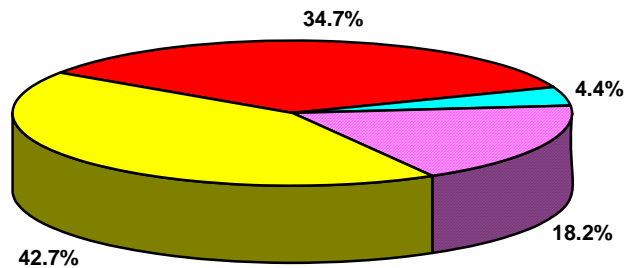
¹ Revised in 1994, based on US Census data, as adjusted by information from the Department of Finance and the Department of Corrections.

² The 154-day report for the March 2002 Primary was produced in October 2001.

REGISTRATION BY POLITICAL PARTY

<u>Year</u>	<u>Dem</u>	<u>Rep</u>	<u>Other</u>	<u>Declined to State</u>	<u>Democratic Counties</u>	<u>Republican Counties</u>
2006	42.7%	34.7%	4.4%	18.2%	21	37
2001	45.3%	35.0%	5.2%	14.5%	23	35
1998	46.8%	36.2%	5.2%	11.8%	31	27
1994	48.8%	37.1%	3.8%	10.3%	44	14
1990	49.9%	39.0%	2.2%	8.9%	45	13

January 3, 2006 Registration Percentages



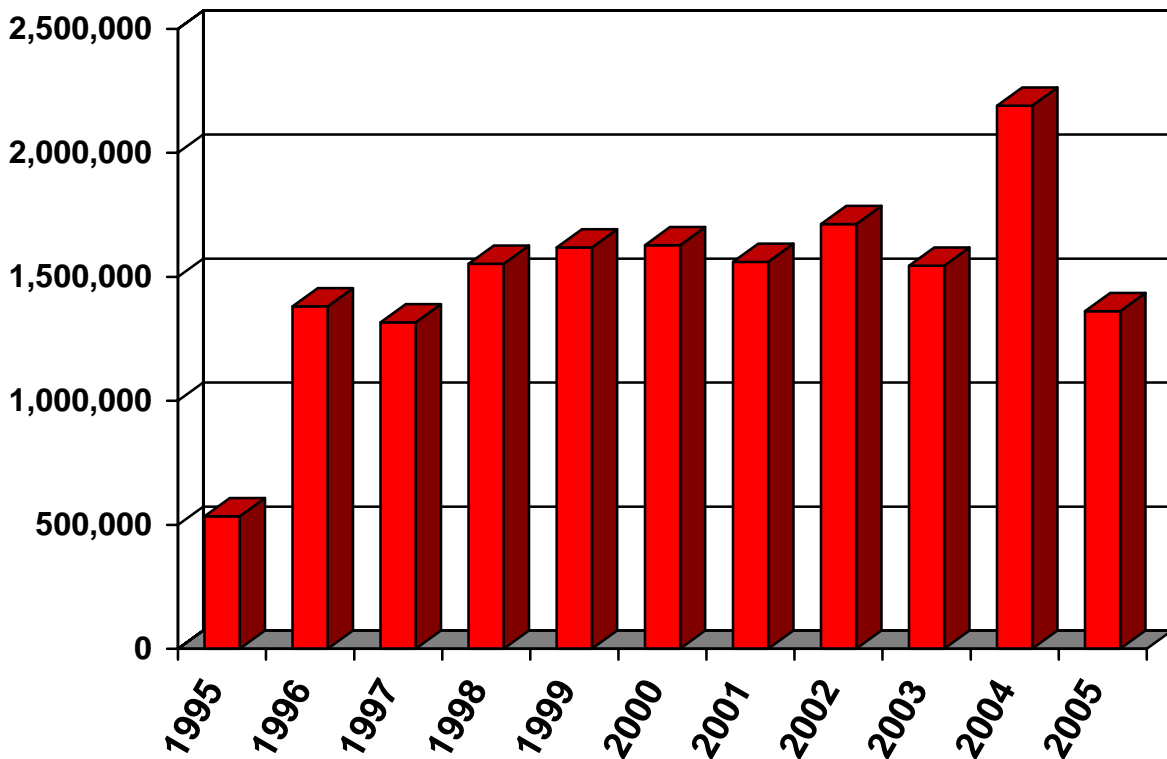
■ Democratic 42.7% ■ Republican 34.7% ■ Other 4.4% ■ Decline to State 18.2%

**REPORT OF REGISTRATION
JANUARY 3, 2006**

Since the October 2, 2001 (154-Day) Report of Registration:

- The total registration in the state has increased from 15,336,856 to 15,810,412.
- The percentage number of total registered voters compared to eligible voters has declined from 71.8% to 70.1%.
- The percentage number of voters who have “Declined to State” their political party has increased from 14.5% to 18.2%.
- The percentage registration in the qualified political parties has declined from 84.6% to 81.3%.
- The percentage registration in the Democratic Party declined from 45.3% to 42.7%.
- The percentage registration in the Republican Party declined from 35.0% to 34.7%
- Since June 19, 1995, (when NVRA began) through November 30, 2005, 16,386,893 people have registered or reregistered to vote in conjunction with “Motor Voter.”

NVRA Registrations



POLITICAL PARTY REGISTRATION BY COUNTY

154-Day Close – June 6, 2006 Gubernatorial Primary Election

The top ten Democratic Party, Republican Party and Declined to State counties in terms of party registration:

<u>Democratic Party</u>		<u>Republican Party</u>		<u>Declined to State</u>	
Alameda	55.28%	Placer	52.12%	San Francisco	28.52%
San Francisco	54.27%	Sutter	49.59%	Santa Clara	23.69%
Imperial	54.10%	Shasta	49.50%	Mono	23.44%
Santa Cruz	53.08%	Madera	49.27%	Alpine	22.46%
Marin	51.36%	Tulare	48.91%	Alameda	21.74%
Los Angeles	50.35%	Modoc	48.68%	San Mateo	21.67%
Sonoma	49.93%	Kern	48.59%	San Diego	20.97%
San Mateo	49.17%	Orange	48.34%	Marin	20.04%
Solano	48.80%	Glenn	47.78%	Humboldt	19.87%
Contra Costa	48.29%	Colusa	47.08%	Yolo	19.76%

The top three American Independent Party, Green Party, Libertarian Party, and Natural Law Party counties in terms of party registration:

<u>American Independent Party</u>		<u>Green Party</u>	
Lassen	4.21%	Humboldt	5.29%
Yuba	3.87%	Mendocino	4.88%
Sierra	3.85%	Santa Cruz	3.30%

<u>Libertarian Party</u>		<u>Natural Law Party</u>	
Sierra	1.27%	San Diego	0.30%
Calaveras	1.19%	Siskiyou	0.23%
Siskiyou	1.05%	Los Angeles	0.21%