

15-DAY REPORT OF REGISTRATION
October 18, 2010, for the November 2, 2010, General Election

**HISTORICAL VOTER REGISTRATION STATISTICS FOR
15-DAY CLOSE FOR GENERAL ELECTIONS IN GUBERNATORIAL ELECTION YEARS**

TOTAL VOTER REGISTRATION

<u>Report Date</u>	<u>Eligible Voters¹</u>	<u>Registered Voters</u>	<u>Percent</u>
October 18, 2010	23,551,699	17,285,883	73.40%
October 23, 2006	22,652,190	15,837,108	69.91%
October 21, 2002	21,466,274	15,303,469	71.29%
October 5, 1998 ²	20,806,462	14,969,185	71.94%
October 11, 1994 ²	18,946,358	14,723,784	77.71%

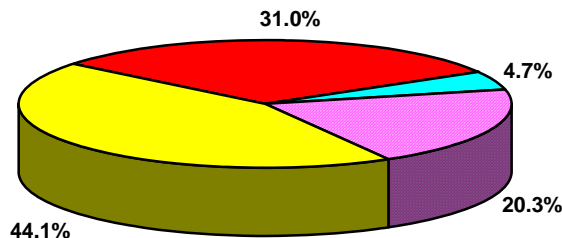
¹The figures given are unofficial but are based on U.S. Census data, as adjusted by information from the California Department of Finance and the California Department of Corrections and Rehabilitation.

²The close of registration was 29 days prior to the election.

REGISTRATION BY POLITICAL PARTY

<u>Report Date</u>	<u>Dem</u>	<u>Rep</u>	<u>Other</u>	<u>Decline to State</u>	<u>Counties with Majority of Dem</u>	<u>Counties with Majority of Rep</u>
October 18, 2010	44.1%	31.0%	4.7%	20.3%	27	31
October 23, 2006	42.5%	34.3%	4.4%	18.7%	23	35
October 21, 2002	44.6%	35.2%	5.1%	15.2%	22	36
October 5, 1998	46.7%	35.5%	5.2%	12.7%	30	28
October 11, 1994	49.0%	37.2%	3.7%	10.3%	40	18

Political Party Registration Percentages



■ Democratic 44.1%
 ■ Republican 31.0%
 ■ Other 4.7%
 ■ Decline to State 20.3%

15-DAY REPORT OF REGISTRATION

October 18, 2010, for the November 2, 2010, General Election

TRENDS

Since the last 15-day Report of Registration for a General Election in a gubernatorial election year (October 23, 2006):

- The total voter registration in the state increased from 15,837,108 to 17,285,883.
- The percentage of the total number of registered voters compared to the number of people who are eligible to register to vote increased from 69.9% to 73.4%.
- The percentage of voters who have declined to state their political party affiliation increased from 18.7% to 20.3%.
- The percentage of people registered with a qualified political party decreased from 80.7% to 79%.
- The percentage of voters registered with the Democratic Party increased from 42.5% to 44.1%.
- The percentage of voters registered with the Republican Party decreased from 34.3% to 31%.

POLITICAL PARTY REGISTRATION HIGHLIGHTS

The counties with the 10 highest percentages of Democratic Party, Republican Party, and Decline to State registered voters are:

<u>Democratic Party</u>		<u>Republican Party</u>		<u>Decline to State</u>	
Alameda	56.81%	Modoc	49.24%	San Francisco	29.59%
San Francisco	56.26%	Placer	48.23%	Santa Clara	26.72%
Santa Cruz	54.83%	Lassen	47.82%	Mono	24.77%
Marin	54.61%	Shasta	47.25%	San Mateo	23.80%
Monterey	53.45%	Sutter	46.28%	San Diego	23.20%
Sonoma	52.13%	Colusa	46.15%	Humboldt	22.18%
San Mateo	51.77%	Glenn	45.81%	Yolo	22.14%
Imperial	51.68%	Amador	45.66%	Alpine	22.10%
Los Angeles	51.40%	Tulare	45.49%	Alameda	22.07%
Contra Costa	49.80%	Kings	45.36%	Marin	21.83%

The counties with the three highest percentages of American Independent Party, Green Party, Libertarian Party, and Peace and Freedom Party registered voters are:

<u>American Independent Party</u>		<u>Green Party</u>	
Sierra	5.00%	Mendocino	3.95%
Lassen	4.94%	Humboldt	3.87%
Tehama	4.88%	Santa Cruz	2.14%

<u>Libertarian Party</u>		<u>Peace and Freedom Party</u>	
Calaveras	1.16%	Mendocino	0.56%
Sierra	1.09%	Los Angeles	0.51%
Trinity	1.02%	Del Norte/Trinity	0.42%