

15-DAY REPORT OF REGISTRATION
October 20, 2008, for the November 4, 2008, General Election

**HISTORICAL CLOSE-OF-REGISTRATION
STATISTICS FOR PRESIDENTIAL GENERAL ELECTIONS**

TOTAL VOTER REGISTRATION

<u>Report Date</u>	<u>Eligible Voters</u> ¹	<u>Registered Voters</u>	<u>Percent</u>	<u>Registration Close</u> ²
Oct. 20, 2008	23,208,710	17,304,091	74.56%	15-day Close
Oct. 18, 2004	22,075,036	16,557,273	75.00%	15-day Close
Oct. 10, 2000	21,461,275	15,707,307	73.19%	29-day Close
Oct. 7, 1996	19,526,991	15,662,075	80.21%	29-day Close
Oct. 5, 1992	20,863,687	15,101,473	72.38%	29-day Close

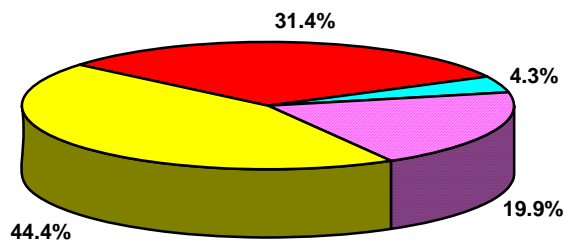
¹ Revised in 1994, based on U.S. Census data, as adjusted by information from the California Department of Finance and the California Department of Corrections and Rehabilitation.

² Assembly Bill 1094 (Chapter 899, Statutes of 2000) changed the voter registration deadline from a 29-day close to a 15-day close.

REGISTRATION BY POLITICAL PARTY

<u>Report Date</u>	<u>Dem</u>	<u>Rep</u>	<u>Other</u>	<u>Decline to State</u>	<u>Counties with Majority of Dem</u>	<u>Counties with Majority of Rep</u>
Oct. 20, 2008	44.4%	31.4%	4.3%	19.9%	26	32
Oct. 18, 2004	43.0%	34.7%	4.6%	17.7%	21	37
Oct. 10, 2000	45.4%	34.9%	5.3%	14.4%	26	32
Oct. 7, 1996	47.2%	36.4%	5.1%	11.3%	32	26
Oct. 5, 1992	49.1%	37.0%	3.6%	10.3%	45	13

Political Party Registration Percentages



■ Democratic 44.4% ■ Republican 31.4% ■ Other 4.3% ■ Decline to State 19.9%

15-DAY REPORT OF REGISTRATION
October 20, 2008, for the November 4, 2008, General Election

TRENDS

Since the last 15-Day Report of Registration during a presidential election year (October 18, 2004):

- The total voter registration in the state has increased from 16,557,273 to 17,304,091.
- The percentage of the total number of registered voters compared to the number of people who are eligible to register to vote has decreased from 75.0% to 74.56%.
- The percentage of voters who have declined to state their political party affiliation has increased from 17.7% to 19.9%.
- The percentage of people registered with a qualified political party has decreased from 81.8% to 79.4%.
- The percentage of voters registered with the Democratic Party increased from 43.0% to 44.4%.
- The percentage of voters registered with the Republican Party decreased from 34.7% to 31.4%.

POLITICAL PARTY REGISTRATION BY COUNTY

The counties with the 10 highest percentages of Democratic Party, Republican Party, and Decline to State registered voters are:

<u>Democratic Party</u>		<u>Republican Party</u>		<u>Decline to State</u>	
Alameda	57.59%	Modoc	49.85%	San Francisco	29.35%
San Francisco	56.49%	Placer	48.74%	Santa Clara	25.92%
Santa Cruz	54.92%	Shasta	47.78%	Mono	24.71%
Marin	54.36%	Lassen	47.63%	San Mateo	23.64%
Imperial	52.56%	Sutter	46.93%	San Diego	23.11%
Sonoma	52.37%	Madera	46.30%	Alameda	22.63%
Los Angeles	51.80%	Colusa	46.08%	Alpine	21.69%
San Mateo	51.21%	Glenn	45.93%	Yolo	21.64%
Solano	50.73%	Kings	45.68%	Marin	21.48%
Monterey	50.38%	Tulare	45.61%	Humboldt	21.25%

The counties with the three highest percentages of American Independent Party, Green Party, Libertarian Party, and Peace and Freedom Party registered voters are:

<u>American Independent Party</u>		<u>Green Party</u>	
Tehama	4.26%	Mendocino	4.00%
Lassen	4.24%	Humboldt	4.00%
Yuba	3.95%	Santa Cruz	2.25%

<u>Libertarian Party</u>		<u>Peace and Freedom Party</u>	
Calaveras	1.11%	Trinity	0.55%
Sierra	0.99%	Sacramento	0.52%
Trinity	0.92%	Los Angeles	0.51%