

15-DAY REPORT OF REGISTRATION

May 24, 2010, for the June 8, 2010, Statewide Direct Primary Election

HISTORICAL VOTER REGISTRATION STATISTICS FOR 15-DAY CLOSE FOR STATEWIDE DIRECT PRIMARIES IN GUBERNATORIAL ELECTION YEARS

TOTAL VOTER REGISTRATION

<u>Report Date</u>	<u>Eligible Voters¹</u>	<u>Registered Voters</u>	<u>Percent</u>
May 24, 2010	23,453,690	16,977,031	72.39%
May 22, 2006	22,542,844	15,668,439	69.51%
Feb. 19, 2002 ²	21,507,390	15,280,808	71.05%
May 4, 1998 ³	20,653,410	14,605,677	70.72%
May 9, 1994 ³	18,946,358	14,171,411	74.80%

¹Based on U.S. Census data, as adjusted by information from the California Department of Finance and the California Department of Corrections and Rehabilitation.

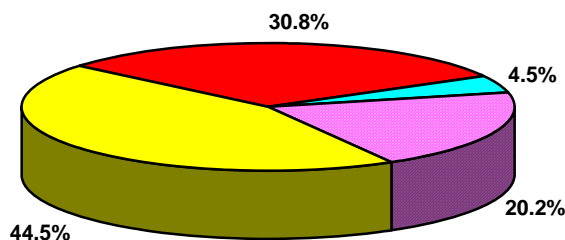
²The 2002 Statewide Direct Primary was conducted in March rather than June.

³The close of registration was 29 days prior to the election.

REGISTRATION BY POLITICAL PARTY

<u>Report Date</u>	<u>Dem</u>	<u>Rep</u>	<u>Other</u>	<u>Decline to State</u>	<u>Counties with Majority of Dem</u>	<u>Counties with Majority of Rep</u>
May 24, 2010	44.5%	30.8%	4.5%	20.2%	28	30
May 22, 2006	42.7%	34.4%	4.5%	18.5%	21	37
Feb. 19, 2002	45.0%	35.0%	5.2%	14.8%	21	37
May 4, 1998	46.8%	35.8%	5.0%	12.4%	31	27
May 9, 1994	48.9%	37.1%	3.6%	10.4%	41	17

Political Party Registration Percentages



■ Democratic 44.5%
 ■ Republican 30.8%
 ■ Other 4.5%
 ■ Decline to State 20.2%

15-DAY REPORT OF REGISTRATION
May 24, 2010, for the June 8, 2010, Statewide Direct Primary Election

TRENDS

Since the last 15-day Report of Registration for a Statewide Direct Primary in a gubernatorial election year (May 22, 2006):

- The total voter registration in the state increased from 15,668,439 to 16,977,031.
- The percentage of the total number of registered voters compared to the number of people who are eligible to register to vote increased from 69.5% to 72.4%.
- The percentage of voters who have declined to state their political party affiliation increased from 18.5% to 20.2%.
- The percentage of people registered with a qualified political party decreased from 81.1% to 79.1%.
- The percentage of voters registered with the Democratic Party increased from 42.7% to 44.5%.
- The percentage of voters registered with the Republican Party decreased from 34.4% to 30.8%.

POLITICAL PARTY REGISTRATION HIGHLIGHTS

The counties with the 10 highest percentages of Democratic Party, Republican Party, and Decline to State registered voters are:

Democratic Party

Alameda	57.53%
San Francisco	56.61%
Santa Cruz	55.06%
Marin	54.75%
Monterey	53.11%
Sonoma	52.34%
Imperial	52.18%
San Mateo	52.18%
Los Angeles	51.79%
Solano	50.23%

Republican Party

Modoc	50.21%
Placer	48.28%
Lassen	47.88%
Shasta	47.24%
Sutter	46.43%
Colusa	45.92%
Madera	45.71%
Glenn	45.59%
Tulare	45.56%
Kings	45.25%

Decline to State

San Francisco	29.46%
Santa Clara	26.52%
Mono	24.36%
San Mateo	23.40%
San Diego	23.15%
Alpine	22.58%
Alameda	22.56%
Yolo	21.96%
Humboldt	21.77%
Marin	21.56%

The counties with the three highest percentages of American Independent Party, Green Party, Libertarian Party, and Peace and Freedom Party registered voters are:

American Independent Party

Lassen	4.81%
Tehama	4.78%
Sierra	4.70%

Green Party

Mendocino	4.01%
Humboldt	3.84%
Santa Cruz	2.19%

Libertarian Party

Calaveras	1.15%
Sierra	1.06%
Trinity	0.96%

Peace and Freedom Party

Mendocino	0.55%
Los Angeles	0.51%
Sacramento	0.46%