

REPORT OF REGISTRATION OCTOBER 7, 2002

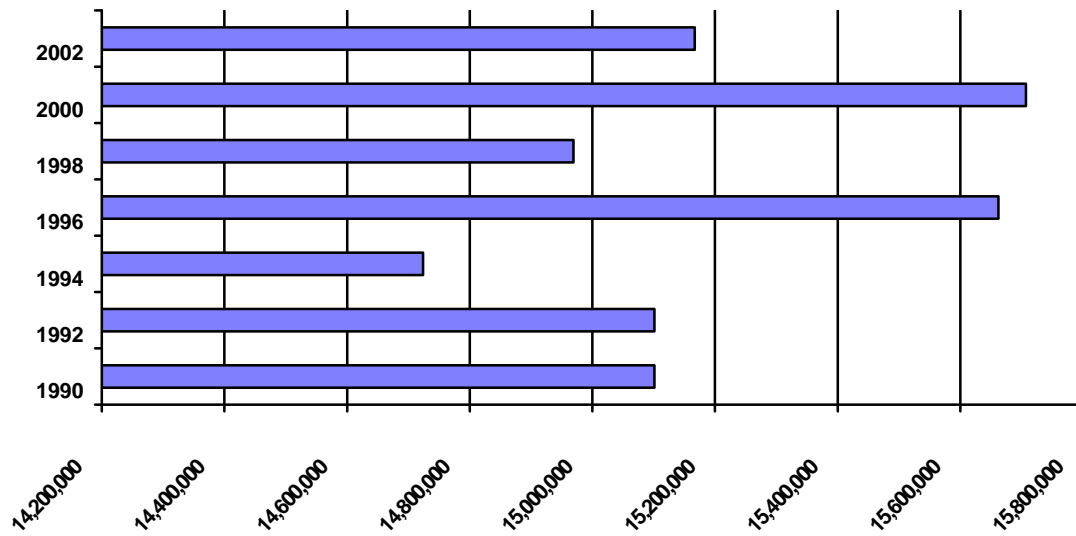
HISTORICAL REGISTRATION STATISTICS (General Election)

TOTAL VOTER REGISTRATION -- 29-DAY CLOSE

<u>Year</u>	<u>Number Eligibles*</u>	<u>Registered Voters</u>	<u>Percent Registration</u>
2002	21,451,081	15,167,159	70.71%
2000	21,461,275	15,707,307	73.19%
1998	20,806,462	14,969,185	71.94%
1996	19,526,991	15,662,075	80.21%
1994	18,946,358	14,723,784	77.71%
1992	20,864,000	15,101,473	72.38%
1990	20,863,687	15,101,473	72.38%

* Revised in 1994, based on US Census data, as adjusted by information from the Department of Finance

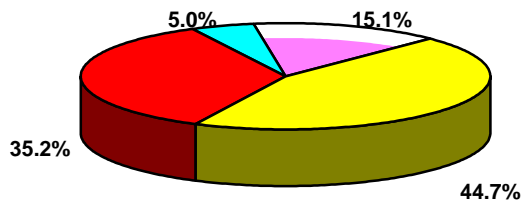
Historical Registration Totals -- 29-Day Close



**REGISTRATION BY POLITICAL PARTY
29-Day Close (General Election)**

<u>Year</u>	<u>Dem</u>	<u>Rep</u>	<u>Other</u>	<u>Decline to State</u>	<u>Democrat Counties</u>	<u>Republican Counties</u>
2002	44.7%	35.2%	5.0%	15.1%	24	34
2000	45.4%	34.9%	5.3%	14.4%	25	32
1998	46.6%	35.5%	5.2%	12.7%	30	28
1996	47.2%	36.4%	5.1%	11.3%	32	26
1994	49.0%	37.1%	3.7%	10.2%	40	18
1992	49.1%	37.0%	3.6%	10.3%	45	13
1990	49.5%	39.2%	2.3%	9.0%	44	14

October 7, 2002 Registration Percentages



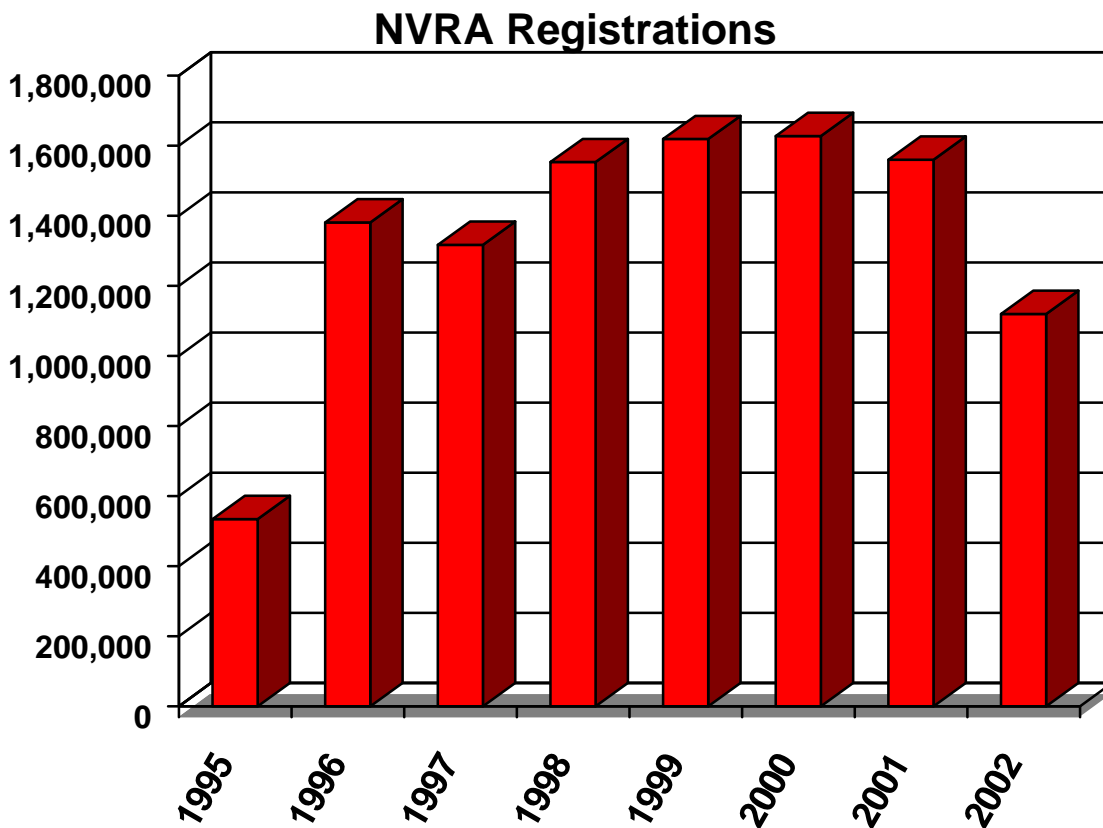
■ Democratic 44.7%
 ■ Republican 35.2%
 ■ Other 5.0%
 ■ Decline to State 15.1%

REPORT OF REGISTRATION OCTOBER 7, 2002

TRENDS:

Since the October 10, 2000 (29-Day General Election) Report of Registration:

- the percentage of total registration in the state has decreased from 73.2% to 70.7%;
- registration in the qualified political parties has decreased from 85.6% to 84.1%;
- registration in the Democratic party decreased from 45.4% to 44.7% ;
- registration in the Republican party increased from 34.9% to 35.2%;
- the number of voters who have declined to state has increased from 14.4% to 15.1%; and
- since 6/19/95 (when NVRA began) through August 31, 2002, 10,710,475 people have registered or reregistered to vote in conjunction with "Motor Voter."



POLITICAL PARTY REGISTRATION BY COUNTY

29-Day Close – General Election

The top ten Democratic Party, Republican Party and Declined to State counties in terms of party registration:

<u>Democratic Party</u>		<u>Republican Party</u>		<u>Declined to State</u>	
Alameda	55.75%	Placer	51.70%	San Francisco	25.07%
San Francisco	55.32%	Sutter	50.55%	Alpine	21.28%
Imperial	54.22%	Madera	50.09%	Santa Clara	19.88%
Los Angeles	52.32%	Orange	48.95%	Mono	18.65%
Santa Cruz	51.30%	Shasta	48.80%	San Mateo	18.34%
San Mateo	50.33%	Riverside	48.44%	Alameda	17.79%
Solano	50.24%	Tulare	48.09%	Sierra	17.64%
Sonoma	50.21%	Inyo	48.03%	San Diego	17.53%
Marin	50.19%	Modoc	47.93%	Marin	17.49%
Contra Costa	49.08%	Kern	47.73%	Lassen	16.68%

The top three American Independent Party, Green Party, Libertarian Party, Natural Law Party, and Reform Party counties in terms of party registration:

<u>American Independent Party</u>		<u>Green Party</u>	
Lassen	4.23%	Humboldt	6.96%
Alpine	3.99%	Mendocino	5.83%
Tehama	3.75%	Santa Cruz	4.99%

<u>Libertarian Party</u>		<u>Natural Law Party</u>	
Calaveras	1.48%	San Diego	0.75%
Sierra	1.40%	Los Angeles	0.47%
Trinity	1.28%	Siskiyou	0.45%

<u>Reform Party</u>	
San Diego	0.75%
Alpine	0.60%
Nevada	0.60%