

60-DAY REPORT OF REGISTRATION
September 3, 2010, for the November 2, 2010, General Election

**HISTORICAL VOTER REGISTRATION STATISTICS FOR 60-DAY CLOSE
FOR GENERAL ELECTIONS IN GUBERNATORIAL ELECTION YEARS**

TOTAL VOTER REGISTRATION

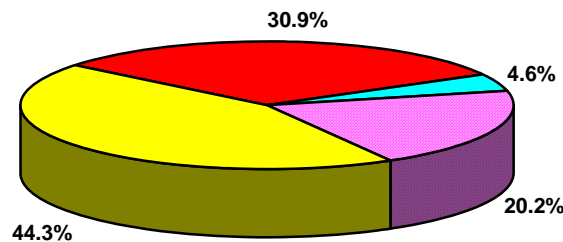
<u>Report Date</u>	<u>Eligible Voters¹</u>	<u>Registered Voters</u>	<u>Percent</u>
September 3, 2010	23,521,995	16,993,075	72.24%
September 8, 2006	22,620,265	15,614,659	69.03%
September 6, 2002	21,416,703	15,041,203	70.23%
September 4, 1998	20,775,402	14,678,545	70.65%
September 9, 1994	18,946,358	14,353,977	75.76%

¹The figures given are unofficial but are based on U.S. Census data, as adjusted by information from the California Department of Finance and the California Department of Corrections and Rehabilitation.

REGISTRATION BY POLITICAL PARTY

<u>Report Date</u>	<u>Dem</u>	<u>Rep</u>	<u>Other</u>	<u>Decline to State</u>	<u>Counties with Majority of Dem</u>	<u>Counties with Majority of Rep</u>
September 3, 2010	44.3%	30.9%	4.6%	20.2%	27	31
September 8, 2006	42.7%	34.3%	4.4%	18.6%	22	36
September 6, 2002	44.7%	35.3%	5.1%	15.0%	23	35
September 4, 1998	46.7%	35.6%	5.1%	12.6%	30	28
September 9, 1994	49.0%	37.2%	3.6%	10.3%	40	18

Political Party Registration Percentages



■ Democratic 44.3%
 ■ Republican 30.9%
 ■ Other 4.6%
 ■ Decline to State 20.2%

60-DAY REPORT OF REGISTRATION
September 3, 2010, for the November 2, 2010, General Election

TRENDS

Since the last 60-day Report of Registration for a General Election in a gubernatorial election year (September 8, 2006):

- The total voter registration in the state increased from 15,614,659 to 16,993,075.
- The percentage of the total number of registered voters compared to the number of people who are eligible to register to vote increased from 69% to 72.2%.
- The percentage of voters who have declined to state their political party affiliation increased from 18.6% to 20.2%.
- The percentage of people registered with a qualified political party decreased from 80.9% to 79.1%.
- The percentage of voters registered with the Democratic Party increased from 42.7% to 44.3%.
- The percentage of voters registered with the Republican Party decreased from 34.3% to 30.9%.

POLITICAL PARTY REGISTRATION HIGHLIGHTS

The counties with the 10 highest percentages of Democratic Party, Republican Party, and Decline to State registered voters are:

Democratic Party

Alameda	57.32%
San Francisco	56.48%
Santa Cruz	54.95%
Marin	54.70%
Monterey	53.39%
Sonoma	52.24%
San Mateo	52.01%
Imperial	51.98%
Los Angeles	51.63%
Contra Costa	50.15%

Republican Party

Modoc	48.96%
Placer	48.39%
Lassen	47.91%
Shasta	47.34%
Sutter	46.35%
Colusa	46.00%
Madera	45.70%
Glenn	45.69%
Tulare	45.59%
Amador	45.35%

Decline to State

San Francisco	29.54%
Santa Clara	26.66%
Mono	24.74%
San Mateo	23.59%
San Diego	23.06%
Alpine	22.34%
Alameda	22.33%
Yolo	21.92%
Humboldt	21.80%
Marin	21.66%

The counties with the three highest percentages of American Independent Party, Green Party, Libertarian Party, and Peace and Freedom Party registered voters are:

American Independent Party

Sierra	4.96%
Lassen	4.87%
Tehama	4.83%

Green Party

Mendocino	3.98%
Humboldt	3.81%
Santa Cruz	2.15%

Libertarian Party

Sierra	1.16%
Calaveras	1.15%
Trinity	0.99%

Peace and Freedom Party

Mendocino	0.55%
Los Angeles	0.51%
Sacramento	0.42%