

# REPORT OF REGISTRATION

## January 2, 2004

### HISTORICAL REGISTRATION STATISTICS FOR 60-DAY CLOSE

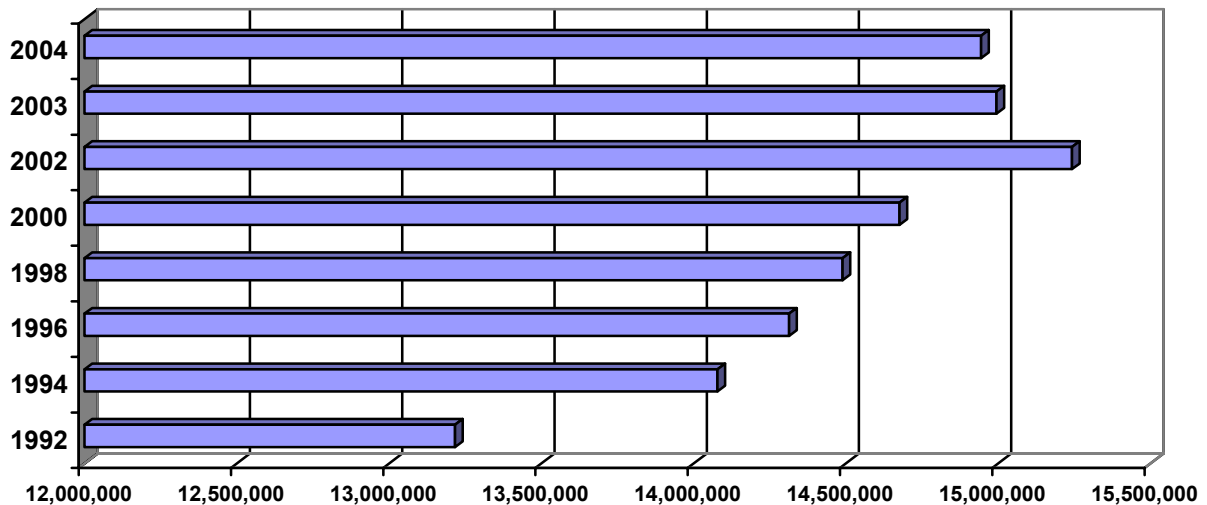
#### TOTAL VOTER REGISTRATION

<u>Year</u>	<u>Eligible Voters</u> <sup>1</sup>	<u>Registered Voters</u>	<u>Percent Registration</u>	<u>Type of Election</u>
2004	21,843,202	14,945,031	68.42%	Presidential
2003 <sup>2</sup>	21,783,765	14,995,501	68.84%	Statewide Special
2002	21,460,250	15,243,600	71.03%	Gubernatorial
2000	21,190,862	14,676,997	69.26%	Presidential
1998	21,061,868	14,489,546	68.80%	Gubernatorial
1996	19,298,379	14,314,658	74.18%	Presidential
1994	18,946,358	14,078,882	74.31%	Gubernatorial
1992	20,612,814	13,217,022	64.12%	Presidential

<sup>1</sup> Revised in 1994, based on US Census data, as adjusted by information from the Department of Finance and the Department of Corrections.

<sup>2</sup> This Statewide Special Election is considered comparable to a Gubernatorial General Election.

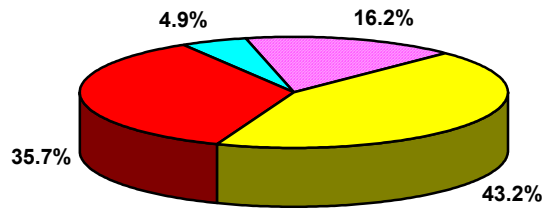
### Historical Registration



## REGISTRATION BY POLITICAL PARTY

<u>Year</u>	<u>Dem</u>	<u>Rep</u>	<u>Other</u>	<u>Declined to State</u>	<u>Democratic Counties</u>	<u>Republican Counties</u>	<u>Type of Election</u>
2004	43.2%	35.7%	4.9%	16.2%	21	37	Presidential
2003	44.1%	35.3%	5.0%	15.7%	22	36	Statewide Special
2002	45.2%	34.9%	5.2%	14.7%	24	34	Gubernatorial
2000	46.2%	34.9%	5.2%	13.7%	29	29	Presidential
1998	46.8%	35.9%	5.1%	12.1%	32	26	Gubernatorial
1996	47.4%	36.8%	5.1%	10.6%	37	21	Presidential
1994	48.9%	37.1%	3.5%	10.3%	42	16	Gubernatorial
1992	48.4%	38.9%	3.1%	9.4%	43	15	Presidential

**January 2, 2004 Registration Percentages**



■ Democratic 43.2% 
 ■ Republican 35.7% 
 ■ Other 4.9% 
 ■ Declined to State 16.2%

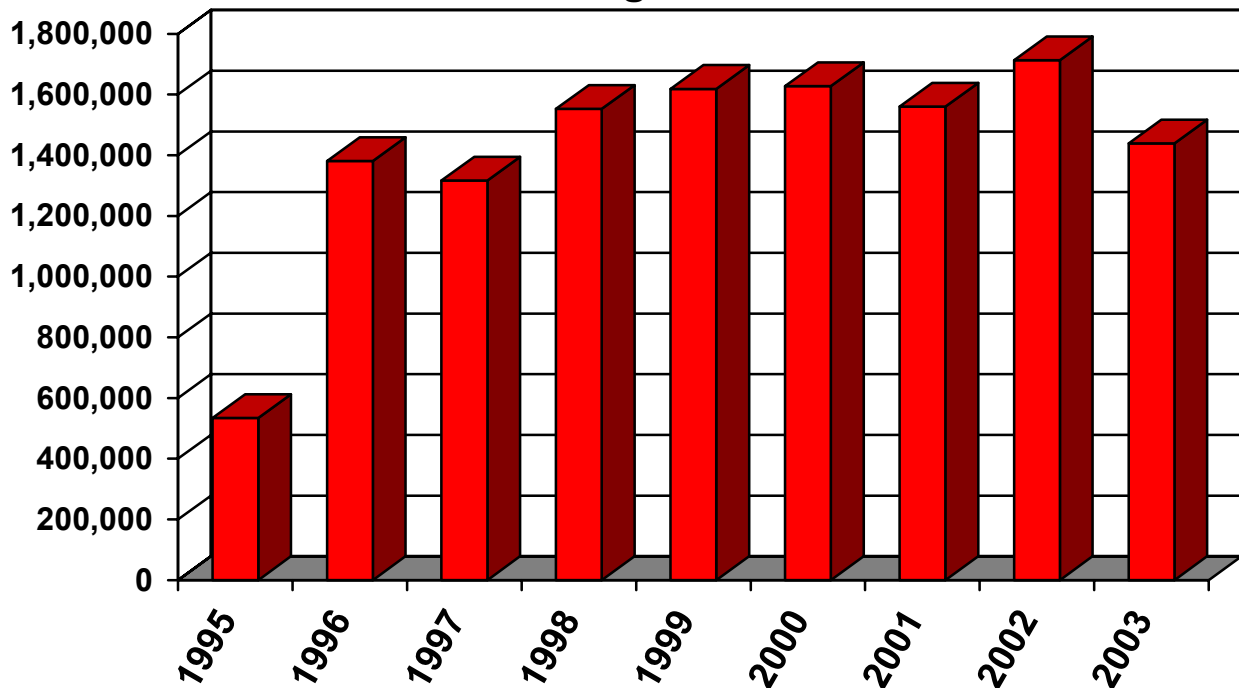
**REPORT OF REGISTRATION**  
**January 2, 2004**

**TRENDS:**

Since the August 8, 2003 (60-Day) Report of Registration:

- The total registration in the state has declined from 14,995,501 to 14,945,031.
- The percentage number of total registered voters compared to eligible voters has declined from 68.8% to 68.4%.
- The percentage number of voters who have “Declined to State” their political party has increased from 15.7% to 16.2%.
- The percentage registration in the qualified political parties has declined from 83.7% to 83.1%.
- The percentage registration in the Democratic party declined from 44.1% to 43.2%.
- The percentage registration in the Republican party increased from 35.3% to 35.7%.
- Since June 19, 1995 (when NVRA began) through November 30, 2003, 12,743,374 people have registered or reregistered in conjunction with “Motor Voter.”

**NVRA Registrations**



# POLITICAL PARTY REGISTRATION BY COUNTY

60-Day Close – March 2, 2004 Presidential Primary Election

The top ten Democratic Party, Republican Party and Declined to State counties in terms of party registration:

## Democratic Party

Alameda	55.04%
San Francisco	53.83%
Imperial	53.05%
Los Angeles	51.03%
Santa Cruz	50.99%
Marin	50.05%
San Mateo	49.59%
Sonoma	49.42%
Solano	48.77%
Contra Costa	48.40%

## Republican Party

Placer	52.54%
Sutter	50.77%
Madera	50.41%
Kern	49.26%
Shasta	49.11%
Tulare	48.79%
Modoc	48.74%
Orange	48.65%
Riverside	48.64%
Glenn	48.25%

## Declined to State

San Francisco	26.95%
Santa Clara	21.59%
Alpine	21.55%
Mono	20.27%
San Mateo	19.80%
Alameda	19.60%
San Diego	18.74%
Marin	18.46%
Sierra	17.53%
Santa Cruz	17.44%

The top three American Independent Party, Green Party, Libertarian Party, Natural Law Party, and Peace and Freedom Party counties in terms of party registration:

## American Independent Party

Lassen	4.13%
Tehama	3.90%
Sierra	3.86%

## Green Party

Humboldt	6.73%
Mendocino	5.95%
Santa Cruz	4.79%

## Libertarian Party

Sierra	1.43%
Calaveras	1.37%
Siskiyou	1.12%

## Natural Law Party

San Diego	0.44%
Siskiyou	0.40%
Los Angeles	0.30%

## Peace and Freedom Party

Sutter	3.36%
Mariposa	1.72%
San Luis Obispo	1.41%