

60-DAY REPORT OF REGISTRATION
March 20, 2009, for the May 19, 2009, Statewide Special Election

HISTORICAL VOTER REGISTRATION STATISTICS
FOR 60-DAY CLOSE IN STATEWIDE SPECIAL ELECTIONS

TOTAL VOTER REGISTRATION

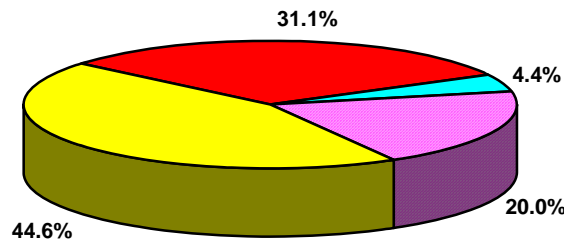
<u>Report Date</u>	<u>Eligible Voters</u> ¹	<u>Registered Voters</u>	<u>Percent</u>	<u>Type of Election</u>
Mar. 20, 2009	23,335,054	17,218,975	73.79%	Statewide Special
Sept. 9, 2005	22,447,310	15,839,327	70.56%	Statewide Special
Aug. 8, 2003	21,783,765	14,995,501	68.84%	Statewide Special
Sept. 3, 1993	21,314,984	14,458,802	67.83%	Statewide Special

¹ Based on U.S. Census data, as adjusted by information from the California Department of Finance and the California Department of Corrections and Rehabilitation.

REGISTRATION BY POLITICAL PARTY

<u>Report Date</u>	<u>Dem</u>	<u>Rep</u>	<u>Other</u>	<u>Decline to State</u>	<u>Counties with Majority of Dem</u>	<u>Counties with Majority of Rep</u>
Mar. 20, 2009	44.6%	31.1%	4.4%	20.0%	27	31
Sept. 9, 2005	42.8%	34.8%	4.4%	18.0%	21	37
Aug. 8, 2003	44.1%	35.3%	5.0%	15.7%	22	36
Sept. 3, 1993	49.0%	37.1%	3.6%	10.3%	44	14

Political Party Registration Percentages



■ Democratic 44.6% ■ Republican 31.1% ■ Other 4.4% ■ Decline to State 20.0%

60-DAY REPORT OF REGISTRATION
March 20, 2009, for the May 19, 2009, Statewide Special Election

TRENDS

Since the last Statewide Special Election 60-day Report of Registration (September 9, 2005):

- The total voter registration in the state has increased from 15,839,327 to 17,218,975.
- The percentage of the total number of registered voters compared to the number of people who are eligible to register to vote has increased from 70.6% to 73.8%.
- The percentage of voters who have declined to state their political party affiliation has increased from 18% to 20%.
- The percentage of people registered with a qualified political party has decreased from 81.5% to 79.3%.
- The percentage of voters registered with the Democratic Party increased from 42.8% to 44.6%.
- The percentage of voters registered with the Republican Party decreased from 34.8% to 31.1%.

POLITICAL PARTY REGISTRATION BY COUNTY

The counties with the 10 highest percentages of Democratic Party, Republican Party, and Decline to State registered voters are:

<u>Democratic Party</u>		<u>Republican Party</u>		<u>Decline to State</u>	
Alameda	57.85%	Modoc	49.75%	San Francisco	29.26%
San Francisco	56.68%	Placer	48.59%	Santa Clara	26.17%
Santa Cruz	55.10%	Shasta	47.75%	Mono	24.75%
Marin	54.78%	Lassen	47.63%	San Mateo	23.50%
Imperial	52.95%	Sutter	46.91%	San Diego	23.22%
Sonoma	52.35%	Madera	46.25%	Alameda	22.49%
Los Angeles	51.98%	Glenn	45.85%	Alpine	22.15%
San Mateo	51.66%	Colusa	45.71%	Yolo	21.50%
Solano	50.76%	Kings	45.67%	Marin	21.30%
Monterey	50.39%	Inyo	45.44%	Humboldt	21.22%

The counties with the three highest percentages of American Independent Party, Green Party, Libertarian Party, and Peace and Freedom Party registered voters are:

<u>American Independent Party</u>		<u>Green Party</u>	
Lassen	4.36%	Mendocino	3.97%
Tehama	4.33%	Humboldt	3.91%
Trinity	3.99%	Santa Cruz	2.20%

<u>Libertarian Party</u>		<u>Peace and Freedom Party</u>	
Calaveras	1.11%	Trinity	0.53%
Trinity	0.94%	Los Angeles	0.51%
Sierra	0.92%	Mendocino	0.51%