

# REPORT OF REGISTRATION

## February 10, 2003

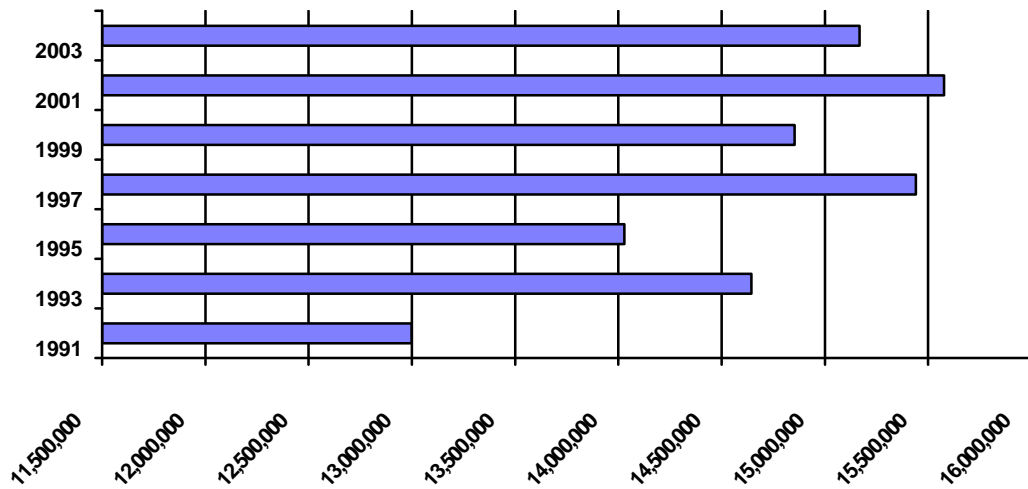
### HISTORICAL REGISTRATION STATISTICS Odd-Numbered Year Report

#### TOTAL VOTER REGISTRATION – February 10, 2003

<u>Year</u>	<u>Number Eligibles*</u>	<u>Registered Voters</u>	<u>Percent Registration</u>
2003	21,588,461	15,168,263	70.26%
2001	21,580,069	15,577,686	72.19%
1999	21,055,042	14,853,121	70.54%
1997	19,639,960	15,441,317	78.62%
1995	18,946,358	14,029,408	74.05%
1993	20,863,687	14,643,987	70.19%
1991	19,339,337	12,997,925	67.21%

\* Revised in 1994, based on US Census data, as adjusted by information from the Department of Finance

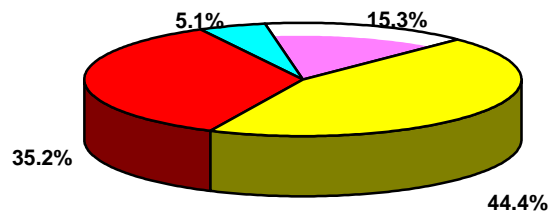
#### Historical Registration Totals -- February 10, 2003 Close



#### REGISTRATION BY POLITICAL PARTY February 10, 2003 Close

<u>Year</u>	<u>Dem</u>	<u>Rep</u>	<u>Other</u>	<u>Decline to State</u>	<u>Democrat Counties</u>	<u>Republican Counties</u>
2003	44.4%	35.2%	5.1%	15.3%	23	35
2001	45.6%	34.8%	4.4%	14.4%	26	32
1999	46.7%	35.3%	5.2%	12.9%	30	28
1997	47.1%	36.4%	5.0%	11.4%	33	25
1995	49.1%	37.3%	3.4%	10.2%	38	20
1993	46.5%	39.6%	3.8%	10.1%	45	13
1991	49.5%	39.3%	2.2%	9.0%	43	15

**February 10, 2003 Registration Percentages**



■ Democratic 44.4%

■ Republican 35.2%

■ Other 5.1%

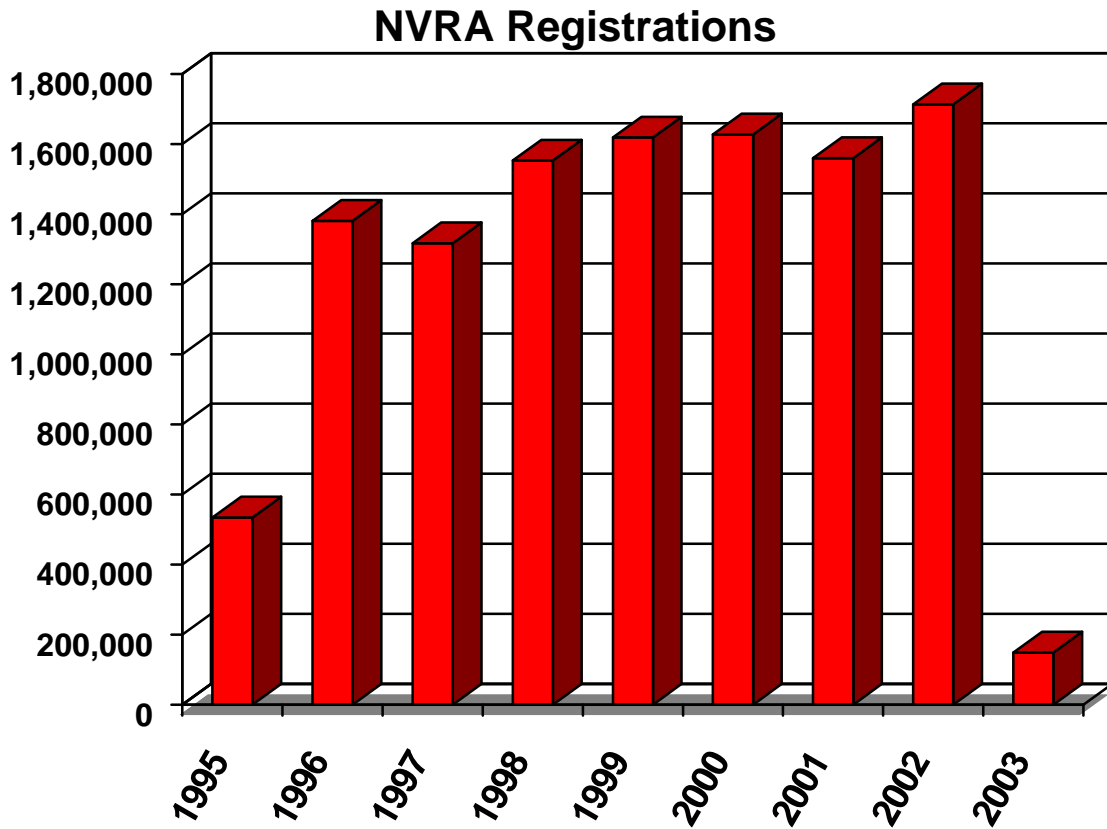
■ Decline to State 15.3%

**REPORT OF REGISTRATION  
February 10, 2003**

**TRENDS:**

Since the February 10, 2001 Report of Registration:

- the percentage of total registration in the state has decreased from 72.2% to 70.3%;
- registration in the qualified political parties has decreased from 84.7% to 83.5%;
- registration in the Democratic party decreased from 45.6% to 44.4% ;
- registration in the Republican party increased from 34.8% to 35.2%;
- the number of voters who have declined to state has increased from 14.4% to 15.3%; and
- since 6/19/95 (when NVRA began) through January 2003, 11,452,817 people have registered or reregistered to vote in conjunction with “Motor Voter.”



## POLITICAL PARTY REGISTRATION BY COUNTY

February 10, 2003 Close

The top ten Democratic Party, Republican Party and Declined to State counties in terms of party registration:

<u><b>Democratic Party</b></u>		<u><b>Republican Party</b></u>		<u><b>Declined to State</b></u>	
Alameda	55.64%	Placer	51.98%	San Francisco	25.39%
San Francisco	55.06%	Sutter	50.57%	Alpine	21.56%
Imperial	54.19%	Madera	49.94%	Santa Clara	20.25%
Los Angeles	52.11%	Shasta	48.90%	Mono	19.39%
Santa Cruz	51.29%	Orange	48.77%	San Mateo	18.75%
San Mateo	50.12%	Inyo	48.51%	Alameda	18.50%
Sonoma	50.10%	Modoc	48.26%	San Diego	17.83%
Solano	50.09%	Riverside	48.20%	Marin	17.68%
Marin	50.07%	Tulare	48.20%	Sierra	17.55%
Contra Costa	49.00%	Kern	48.11%	Lassen	16.91%

The top three American Independent Party, Green Party, Libertarian Party, and Natural Law Party counties in terms of party registration:

<u><b>American Independent Party</b></u>		<u><b>Green Party</b></u>	
Lassen	4.26%	Humboldt	6.91%
Alpine	3.90%	Mendocino	5.90%
Tehama	3.76%	Santa Cruz	5.00%

<u><b>Libertarian Party</b></u>		<u><b>Natural Law Party</b></u>	
Calaveras	1.46%	San Diego	0.73%
Sierra	1.39%	Siskiyou	0.46%
Trinity	1.28%	Los Angeles	0.44%