

REPORT OF REGISTRATION

February 10, 2005

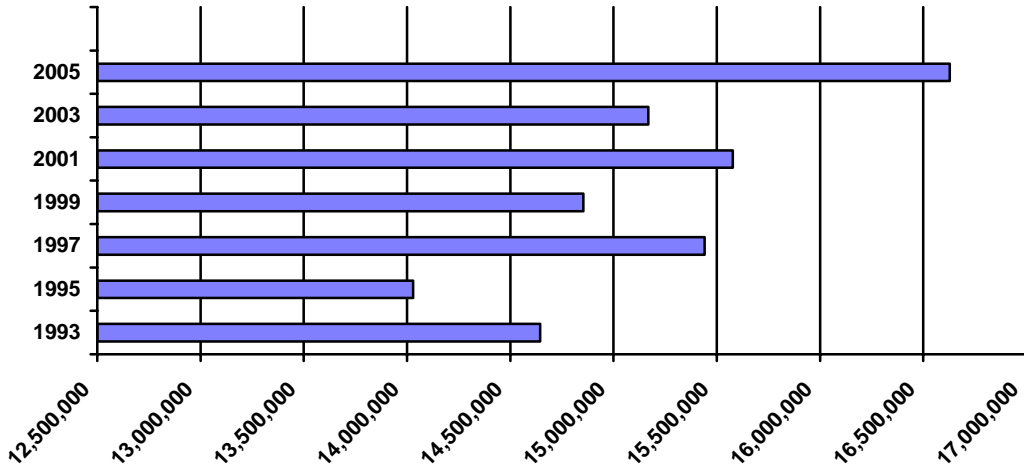
HISTORICAL REGISTRATION STATISTICS Odd-Numbered Year Report

TOTAL VOTER REGISTRATION – February 10, 2005

<u>Year</u>	<u>Eligible Voters</u> ¹	<u>Registered Voters</u>	<u>Percent Registration</u>
2005	22,495,914	16,628,673	73.92%
2003	21,588,461	15,168,263	70.26%
2001	21,580,069	15,577,686	72.19%
1999	21,055,042	14,853,121	70.54%
1997	19,639,960	15,441,317	78.62%
1995	18,946,358	14,029,408	74.05%
1993	20,863,687	14,643,987	70.19%

¹ Revised in 1994, based on US Census data, as adjusted by information from the Department of Finance and the Department of Corrections.

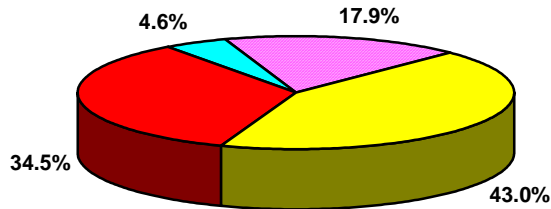
Historical Registration Totals -- February 10, 2005 Close



**REGISTRATION BY POLITICAL PARTY
February 10, 2005 Close**

<u>Year</u>	<u>Dem</u>	<u>Rep</u>	<u>Other</u>	<u>Decline to State</u>	<u>Democratic Counties</u>	<u>Republican Counties</u>
2005	43.0%	34.5%	4.6%	17.9%	21	37
2003	44.4%	35.2%	5.1%	15.3%	23	35
2001	45.6%	34.8%	4.4%	14.4%	26	32
1999	46.7%	35.3%	5.2%	12.9%	30	28
1997	47.1%	36.4%	5.0%	11.4%	33	25
1995	49.1%	37.3%	3.4%	10.2%	38	20
1993	46.5%	39.6%	3.8%	10.1%	45	13

February 10, 2005 Registration Percentages



■ Democratic 43.0%

■ Republican 34.5%

■ Other 4.6%

■ Decline to State 17.9%

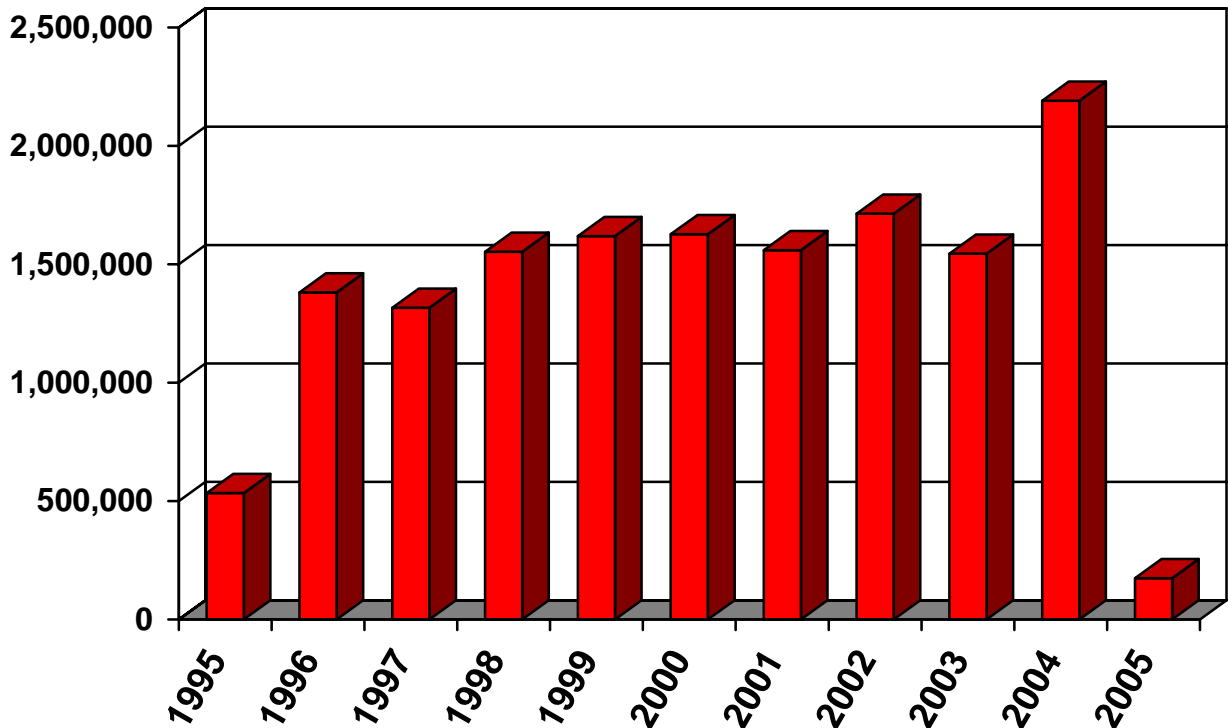
REPORT OF REGISTRATION February 10, 2005

TRENDS:

Since the February 10, 2003 Report of Registration:

- The total registration in the state has increased from 15,168,263 to 16,628,673.
- The percentage number of total registered voters compared to eligible voters has increased from 70.3% to 73.9%.
- The percentage number of voters who have “Declined to State” their political party has increased from 15.3% to 17.9%.
- The percentage registration in the qualified political parties has declined from 83.5% to 77.5%.
- The percentage registration in the Democratic Party declined from 44.4% to 43.0%.
- The percentage registration in the Republican Party declined from 35.2% to 34.5%.
- Since June 19, 1995, (when NVRA began) through January 30, 2005, 15,212,566 people have registered or reregistered to vote in conjunction with “Motor Voter.”

NVRA Registrations



POLITICAL PARTY REGISTRATION BY COUNTY

February 10, 2005 Close

The top ten Democratic Party, Republican Party and Declined to State counties in terms of party registration:

<u>Democratic Party</u>		<u>Republican Party</u>		<u>Declined to State</u>	
Alameda	55.20%	Placer	51.80%	San Francisco	28.33%
Imperial	54.63%	Sutter	49.98%	Santa Clara	23.24%
San Francisco	54.07%	Tulare	49.59%	Alpine	23.23%
Santa Cruz	53.54%	Modoc	49.43%	Mono	22.53%
Marin	51.30%	Madera	49.35%	Alameda	21.51%
Los Angeles	50.70%	Shasta	49.09%	San Mateo	21.40%
Sonoma	49.92%	Kern	48.52%	San Diego	20.57%
San Mateo	49.07%	Orange	48.28%	Marin	19.89%
Monterey	48.37%	Glenn	48.01%	Humboldt	19.24%
Contra Costa	48.33%	Mariposa	47.33%	Yolo	19.02%

The top three American Independent Party, Green Party, Libertarian Party, Natural Law Party, and Peace and Freedom Party counties in terms of party registration:

<u>American Independent Party</u>		<u>Green Party</u>	
Lassen	4.24%	Humboldt	5.57%
Sierra	3.94%	Mendocino	4.90%
Yuba	3.80%	Santa Cruz	3.42%

<u>Libertarian Party</u>		<u>Natural Law Party</u>	
Sierra	1.30%	San Diego	0.35%
Calaveras	1.23%	Los Angeles	0.25%
Siskiyou	1.06%	Siskiyou	0.24%

<u>Peace and Freedom Party</u>	
Sutter	2.96%
Mariposa	1.50%
Trinity	1.41%