

ODD-NUMBERED YEAR REPORT OF REGISTRATION

February 10, 2011

HISTORICAL VOTER REGISTRATION STATISTICS FOR ODD-NUMBERED YEAR REPORTS

TOTAL VOTER REGISTRATION

<u>Report Date</u>	<u>Eligible Voters¹</u>	<u>Registered Voters</u>	<u>Percent</u>
February 10, 2011	23,605,858	17,186,531	72.81%
February 10, 2009	23,302,897	17,334,275	74.39%
February 10, 2007	22,768,146	15,682,358	68.88%
February 10, 2005	22,495,914	16,628,673	73.92%
February 10, 2003	21,588,461	15,168,263	70.26%

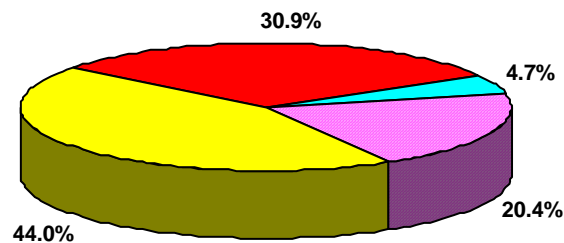
¹The figures given are unofficial but are based on U.S. Census data, as adjusted by information from the California Department of Finance and the California Department of Corrections and Rehabilitation.

REGISTRATION BY POLITICAL PARTY

<u>Report Date</u>	<u>Dem</u>	<u>Rep</u>	<u>Other</u>	<u>No Party Preference</u>	<u>Counties with Majority of Dem</u>	<u>Counties with Majority of Rep</u>
February 10, 2011	44.0%	30.9%	4.7%	20.4%	27	31
February 10, 2009	44.5%	31.1%	4.3%	20.0%	27	31
February 10, 2007	42.5%	34.2%	4.5%	18.8%	22 ¹	35 ¹
February 10, 2005	43.0%	34.5%	4.6%	17.9%	21	37
February 10, 2003	44.4%	35.2%	5.1%	15.3%	23	35

¹Alpine County reported an equal number of Democratic and Republican registered voters.

Political Party Registration Percentages



■ Democratic 44.0%
 ■ Republican 30.9%
 ■ Other 4.7%
 ■ No Party Preference 20.4%

ODD-NUMBERED YEAR REPORT OF REGISTRATION

February 10, 2011

TRENDS

Since the last Odd-Numbered Year Report of Registration (February 10, 2009):

- The total voter registration in the state decreased from 17,334,275 to 17,186,531.
- The percentage of the total number of registered voters compared to the number of people who are eligible to register to vote decreased from 74.4% to 72.8%.
- The percentage of voters who have no party preference increased from 20.0% to 20.4%.
- The percentage of people registered with a qualified political party decreased from 79.3% to 78.9%.
- The percentage of voters registered with the Democratic Party decreased from 44.5% to 44.0%.
- The percentage of voters registered with the Republican Party decreased from 31.1% to 30.9%.

POLITICAL PARTY REGISTRATION HIGHLIGHTS

The counties with the 10 highest percentages of Democratic Party, Republican Party, and No Party Preference registered voters are:

Democratic Party

Alameda	56.74%
San Francisco	56.12%
Marin	54.87%
Santa Cruz	54.68%
Monterey	53.28%
Sonoma	52.06%
San Mateo	51.71%
Imperial	51.63%
Los Angeles	51.34%
Contra Costa	49.90%

Republican Party

Modoc	49.52%
Placer	48.16%
Lassen	48.08%
Shasta	47.32%
Colusa	46.20%
Sutter	46.18%
Tulare	46.03%
Glenn	45.73%
Mariposa	45.70%
Amador	45.56%

No Party Preference

San Francisco	29.81%
Santa Clara	26.46%
Mono	24.93%
San Mateo	23.88%
San Diego	23.48%
Humboldt	22.41%
Yolo	22.28%
Alpine	22.24%
Alameda	22.08%
Mendocino	21.63%

The counties with the three highest percentages of American Independent Party, Green Party, Libertarian Party, and Peace and Freedom Party registered voters are:

American Independent Party

Sierra	5.38%
Lassen	5.00%
Tehama	4.90%

Green Party

Mendocino	3.95%
Humboldt	3.87%
Santa Cruz	2.13%

Libertarian Party

Calaveras	1.14%
Sierra	1.10%
Trinity	1.08%

Peace and Freedom Party

Mendocino	0.57%
Los Angeles	0.53%
Mono	0.46%