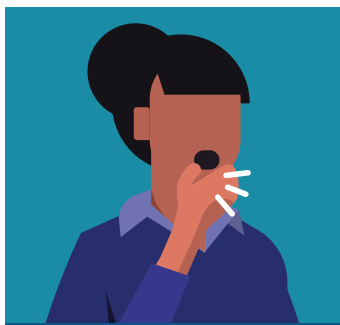


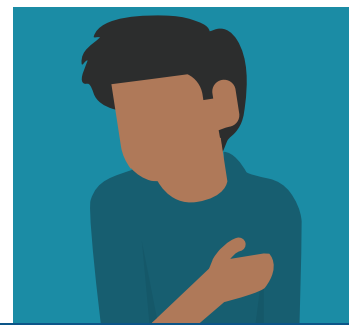
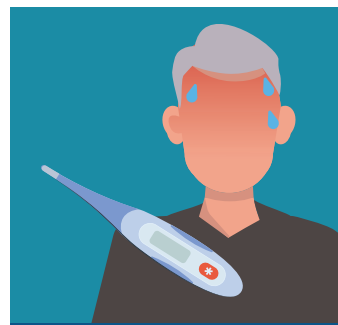
# Cough? Fever?



If you have symptoms of COVID-19, **please don't enter the polling place right now. Instead, call \_\_\_\_\_** for options to allow you to vote without risking the health of others.



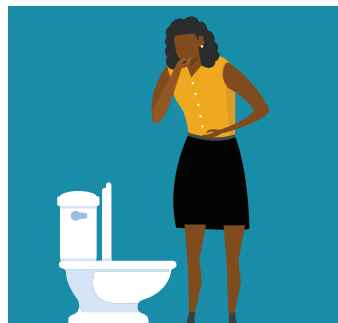
**Cough, shortness of breath or difficulty breathing**



**Fever or chills**



**Muscle or body aches**



**Vomiting or diarrhea**



**New loss of taste or smell**