

CALIFORNIA SECRETARY OF STATE

STUDENTS VOTE PROJECT



2024 General Election College Student Voter Resource Guide

[Click Here to
Register to Vote](#)



Shirley N. Weber, Ph.D.
California Secretary of State



STUDENTSVOTE**PROJECT**
CALIFORNIA SECRETARY OF STATE

Table of Contents

California Students Vote Project Overview	3
Civic and Election Key Dates	4
Important Election Questions	5-10
Outreach Material	11-20
Sample Email Messages.....	12-13
Voter Education Social Media Graphics.....	14-17
Voter Education Posters.....	18
Voter Education Television Graphics.....	19
Voter Checklist (Flyer).....	20



California Students Vote Project Overview

California Students Vote Project

Established in 2016, the California Secretary of State (SOS) Students Vote Project (SVP) is a statewide nonpartisan program that elevates college student voices and promotes civic engagement efforts to build a more inclusive democracy. Through the creation of the Students Vote Project, California was the first state in the nation to build partnerships across the state's major higher education systems to empower college students to participate in the democratic process. Program objectives include increasing college student voter education, voter registration, and outreach. The SVP achieves these objectives by hosting civic engagement events, creating educational resources, and partnering with campuses and outreach organizations. One civic engagement event that occurs during statewide election years is the California University and College Ballot Bowl. Created in 2018, the Ballot Bowl is a friendly competition where all California higher education systems can compete to register the most students to vote.

Student Civic and Voter Empowerment Act (SCVEA)

In 2019, the Student Civic and Voter Empowerment Act ([California Education Code §66850-66852; California Elections Code §2148.5](#)) was enacted to give California colleges and universities the necessary tools to increase civic engagement and participation among young voters. In 2020, the California Secretary of State Students Vote Project was expanded to support and ensure implementation of the landmark law. The law requires the California SOS to work directly with the California Community Colleges (CCCs) and California State Universities (CSUs) to increase college student voter registration. Colleges and universities are encouraged to participate in SVP civic learning opportunities to receive and distribute voter education resources. While the University of California (UC) and the Association of Independent California Colleges and Universities (AICCU) campuses are not required to participate, they continue to be strong partners and supporters of student civic engagement.

To learn more about how your campus can implement the SCVEA, please view the [Student Civic and Voter Empowerment Act Implementation Guide](#).

Civic and Election Key Dates:

General Election Key Dates (November 5, 2024):

- **Monday, October 7:** No later than this date, county elections officials shall begin mailing each registered voter a vote-by-mail ballot.
- **Monday, October 7:** Early voting sites open - to find a location and available times, please visit <https://caearlyvoting.sos.ca.gov>
- **Tuesday, October 8:** Ballot drop-off locations for vote-by-mail ballots are open. To find a location, please visit <https://caearlyvoting.sos.ca.gov>
- **Monday, October 21:** Last day to register to vote online or by mail for the General Election.
- **Tuesday, October 22 - Tuesday, November 5:** Same Day Voter Registration is available; voters can “conditionally” register and vote at a county elections office or polling location after the voter registration deadline, up to and including Election Day.
- **Tuesday, October 29:** Last day for county elections officials to send a registered voter a vote-by-mail ballot.
- **Tuesday, November 5:** General Election - polls are open throughout the state from 7:00 a.m. to 8:00 p.m.

Additional Civic Key Dates:

- **Monday, August 12 - Tuesday, November 5:** 2024 California University and College Ballot Bowl
- **Tuesday, September 17:** National Voter Registration Day
- **Tuesday, October 1:** Deadline to submit a Civic and Voter Empowerment Action Plan (CVEAP) to the California Students Vote Project at caststudentsvote@sos.ca.gov
- **Monday, October 7 - Friday, October 11:** National Voter Education Week
- **Tuesday, October 29:** Vote Early Day
- **Monday, November 4:** Election Hero Day

Important Election Questions

Who Can Register to Vote in California?

To register to vote in California, you must be:

- A United States citizen and a resident of California
- 18 years old or older on Election Day
- Not currently serving a state or federal prison term for the conviction of a felony
- Not currently found mentally incompetent to vote by a court

How Can I Register to Vote?

Online Voter Registration

You can register to vote or update your registration online at <https://registertovote.ca.gov/?t=s>. To register online, you will need the following information:

- California driver's license or California identification card number
- Last four digits of your social security number
- Date of birth

Note: The college student voter registration link will allow the name of the college you attend to be included in your voter registration: <https://registertovote.ca.gov/?t=s>

If you do not have a California driver's license, California identification card, or the last four digits of your social security number readily available, you can still use this form to apply to register to vote. However, you will need to take additional steps to complete your voter registration. You will also need to verify your identity when voting for the first time.

Paper Voter Registration

- Contact your county elections office. They can mail a paper voter registration application to you, or you can register in person.
- Find your county elections office's contact information here: <https://www.sos.ca.gov/elections/voting-resources/county-elections-offices>



Important Election Questions (Continued)

As a College Student, What Address Can I Use to Register to Vote?

- If you are attending college in California and away from home, you may register to vote using either:
 - the California address where you live when going to school (college address), or
 - the California home address where you live when you are not going to school (permanent home address).

California Permanent Home Address

- If you plan to use your California permanent home address to register to vote, you can update your mailing address with your college address so that you can receive your vote-by-mail ballot and state voter information guide by mail.
 - You should do this by **Monday, October 21, 2024** so you receive your vote-by-mail ballot on time. You can update your registration at <https://registertovote.ca.gov/?t=s> or verify your current information at <https://voterstatus.sos.ca.gov>
- If you are attending out-of-state college, you may register to vote in California using your California permanent home address.

Note: Local contests vary based on your registered address. Choosing which address to use when you register to vote is a personal decision. Whatever you decide, you may not register to vote in two places during the same election cycle.

What if I Missed the Voter Registration Deadline?

- The last day to register to vote online or by mail is Monday, October 21, 2024.
- If you missed the online or by mail voter registration deadline, Same Day Voter Registration is available in California up to, and including Election Day.
- Visit <https://caearlyvoting.sos.ca.gov> to find voting centers or polling locations near you.

Important Election Questions (Continued)

What is Same Day Voter Registration?

- Same Day Voter Registration allows eligible citizens to register to vote and cast their ballot after the voter registration deadline up to, and including Election Day.
- A provisional ballot may be used to vote, and it is counted once eligibility is verified.

What if English is Not My Preferred Language?

The statewide voter information guide is available in 10 languages on the California Secretary of State's website:

- English
- Spanish
- Chinese
- Hindi
- Japanese
- Khmer
- Korean
- Tagalog
- Thai
- Vietnamese

Note: You may also request language assistance at in-person voting locations. Visit <https://voterguide.sos.ca.gov> for more information.

Do I Need Identification When I Vote?

- In most cases, a California voter is not required to show identification before casting a ballot.



Important Election Questions (Continued)

- If you did not provide identification when you registered to vote, you may be asked to provide identification when you cast your ballot. Types of certified identification include:
 - Government issued photo identification card
 - Student identification card
 - A copy of a recent utility bill
 - The county voter information guide sent to you by your county elections office

How Can I Return my Vote-by-Mail Ballot?

- California counties must start mailing ballots to active registered voters no later than 29 days before a statewide election.
- Once you mark your ballot, insert your ballot in the ballot return envelope provided, make sure you complete all required information on the ballot return envelope, including your signature.
- You may return your ballot on or before Election Day by:
 - Mailing it to your county elections official by dropping it in a United States Postal Service mailbox, free of charge.
 - Returning it in person to any vote center or polling place within the state or the office of your county elections official.
 - Dropping your ballot off at a drop-off location or into a ballot drop box within the state.
 - Authorizing someone to return the ballot on your behalf.
 - Anyone may return your ballot for you, as long as they do not get paid on a per ballot basis. In order for your ballot to be counted, you must fill out the authorization section found on the outside of your ballot return envelope.
- Visit <https://www.sos.ca.gov/elections/where-and-how> for more information.

Note: *Vote-by-mail ballots that are mailed, must be postmarked on or before Election Day and received by your county elections office no later than seven days after Election Day. If you are not sure your vote-by-mail ballot will arrive in time if mailed, bring it to any vote center or polling place in the state between 7:00 a.m. and 8:00 p.m. on Election Day.*

Important Election Questions (Continued)

When and Where Can I Vote in Person?

Early in Person

- All counties in California offer early in-person voting opportunities.
- Visit <https://caearlyvoting.sos.ca.gov> to find your nearest vote center or polling location.

Early by Mail

- Mark your ballot, sign the ballot return envelope, and place it in the mail early.
- Marked and mailed vote-by-mail ballots must be postmarked on or before Election Day.

Secure Drop Box

- Mark your ballot, sign the ballot return envelope, and place it in a secure drop box no later than 8:00 p.m. on Election Day.
- The secure drop box shall be clearly and visibly marked as an “Official Ballot Drop Box” that shows language stating that tampering with the drop box is a felony.

Election Day

- Polling locations and vote centers will be open from 7:00 a.m. to 8:00 p.m. on Election Day.
- If you are in line by 8:00 p.m., then you have a right to vote. Stay in line until you are able to cast your ballot.

Where’s My Ballot?

- To track your ballot to see if it has been mailed, received, counted, or if there were any issues, use this link to sign-up and receive updates <https://wheresmyballot.sos.ca.gov>
- You can choose to receive updates by:
 - Email
 - Text message (SMS)
 - Voice call

Important Election Questions (Continued)

What's on My Ballot?

The November 5, 2024, General Election ballot will have the following contests:

1. Federal

- United State President/Vice President
- United States Senator (Full term)
- United States Senator (Partial/unexpired term)
- United States Congress

2. State

- State Senate
- Members of the State Assembly
- Propositions

3. Local

- City and county government
- City and county-wide measures

Visit <https://voterguide.sos.ca.gov> for more information or you may check with your county for more information regarding state and local contests www.sos.ca.gov/elections/voting-resources/county-elections-offices

Report any issues you encounter while voting or ask election-related questions to the California Statewide Voter Hotline at (800) 345-VOTE (8683).

Outreach Materials



- **Sample Email Messages**
- **Voter Education Graphics**
- **Voter Checklist (Flyer)**

The sample messages on the following pages will help colleges comply with the Student Civic and Voter Empowerment Act. While we encourage campuses to create their own messages, these samples will help explain critical election dates and registration information.



Sample Email Messages: Key Election Dates Email

Send between September 1 - October 21, 2024

New Message

To

Cc Bcc

Subject Key Dates for the 2024 General Election

Hello students,

The General Election is on Tuesday, November 5, 2024! We want to make sure each of you are registered to vote and can participate in this presidential election. To find more details on the upcoming election, view the information on the links below:

- California Secretary of State Elections Web Pages
<https://vote.ca.gov>
- College student voter registration OR update your registration
<https://registertovote.ca.gov/?t=s>
- Check your voter registration status
<https://voterstatus.sos.ca.gov>

Key Dates and Information

- **Monday, October 7:** No later than this date, county elections officials shall begin mailing each registered voter a vote-by-mail ballot.
- **Monday, October 7:** Early voting sites open - to find a location and available times, please visit <https://caearlyvoting.sos.ca.gov>
- **Tuesday, October 8:** Ballot drop-off locations for vote-by-mail ballots are open. To find a location, please visit <https://caearlyvoting.sos.ca.gov>
- **Monday, October 21:** Last day to [register to vote](#) online or by mail for the General Election.
- **Tuesday, October 22 - Tuesday, November 5:** Same Day Voter Registration is available; voters can "conditionally" register and vote at a county elections office or polling location after the voter registration deadline, up to and including Election Day.
- **Tuesday, October 29:** Last day for county elections officials to send a registered voter a vote-by-mail ballot.
- **Tuesday, November 5:** Election Day (last day to vote) - polls are open throughout the state from 7:00 a.m. to 8:00 p.m.

For more election material and upcoming statewide civic engagement activities for college students, visit the California Secretary of State Students Vote Project website at <https://studentsvoteproject.sos.ca.gov>.

Important Disclaimer for California Registered Voters: The civic and election information provided applies to the county where the campus is located. Election information varies by county. To find the contact information for the California county you are registered to vote in, visit <https://www.sos.ca.gov/elections/voting-resources/county-elections-offices>

Happy election season!

<Insert Name/Department>

Send

Sample Email Messages: Get Out the Vote!

Send between September 1 - November 5, 2024

New Message

To

Cc Bcc

Subject Early Voting Options in California and Other Election Information

Hello <Insert Mascot Name>,

Get ready to make your voices heard in the upcoming 2024 General Election! The presidential election is on Tuesday, November 5, 2024, which is also the last day to cast your ballot.

All active registered voters in California will receive a vote-by-mail-ballot approximately 29 days before the general election. After completing your vote-by-mail ballot and signing the envelope, you may mail it or drop it off at a post office, a certified ballot drop box, or a voting location as early as possible.

Visit <https://sos.ca.gov/elections/voting-resources/county-elections-offices> to find more information about your county elections office, voting options, and locations.

Early Voting

Did you know you can cast your vote early in-person or by mail? Check out early voting options and information by visiting <https://caearlyvoting.sos.ca.gov/> for details on dates, times, and locations. This is a great opportunity to help avoid the Election Day rush!

Resources for Informed Voting

Explore these essential resources to empower yourself as an informed voter.

- Register to Vote (college students):
<https://registertovote.ca.gov/?t=s>
- Statewide Voter Information Guide:
<https://voterguide.sos.ca.gov/>
- California Secretary of State Students Vote Project:
<https://studentsvoteproject.sos.ca.gov>
- Voter Registration Status Tool:
<https://voterstatus.sos.ca.gov/>

Important Disclaimer for California Registered Voters: The civic and election information provided applies to the county where the campus is located. Election information varies by county. To find the contact information for the California county you are registered to vote in, visit <https://www.sos.ca.gov/elections/voting-resources/county-elections-offices>

Happy election season!

<Insert Name/Department>

Send

Voter Education Social Media Graphics

Graphic Set One



Instagram

Download Here



Snapchat

Download Here



Facebook

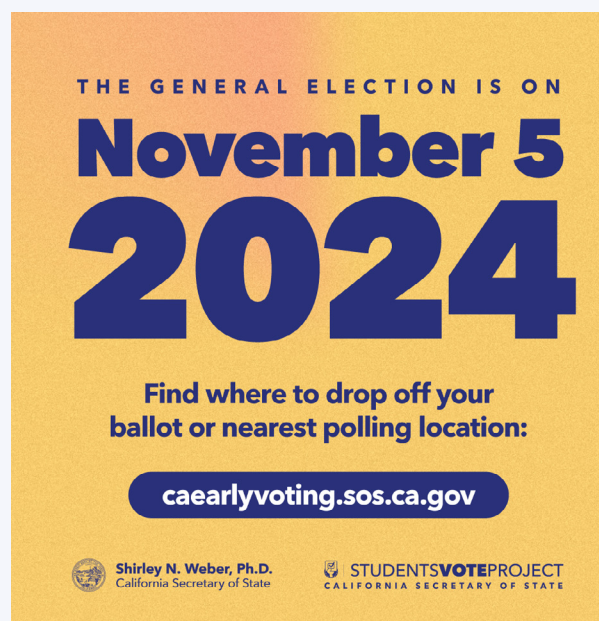
Download Here



X

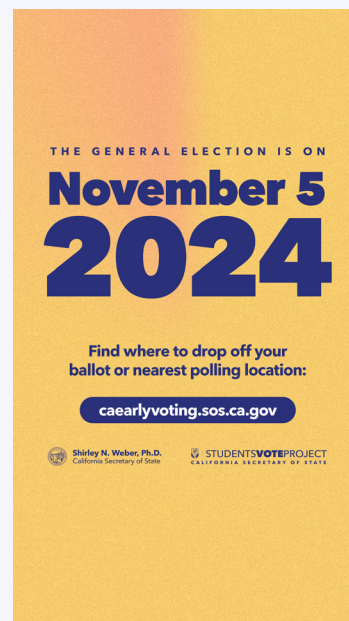
Download Here

Graphic Set Two



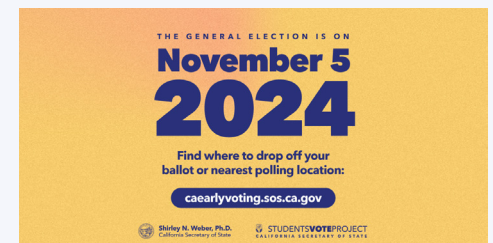
Instagram

Download Here



Snapchat

Download Here



Facebook

Download Here



X

Download Here

Voter Education Social Media Graphics (Continued)

Graphic Set Three



Instagram

Download Here



Snapchat

Download Here



Facebook

Download Here



X

Download Here

Graphic Set Four



Instagram

Download Here



Snapchat

Download Here



Facebook

Download Here



X

Download Here

Voter Education Social Media Graphics (Continued)

Graphic Set Five



Instagram

Download Here



Snapchat

Download Here



Facebook

Download Here



X

Download Here

Graphic Set Six



Instagram

Download Here



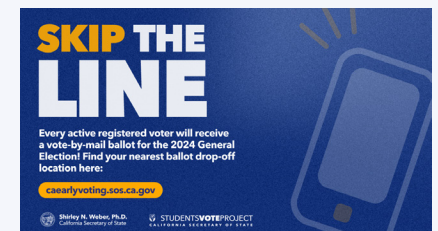
Snapchat

Download Here



Facebook

Download Here



X

Download Here

Voter Education Social Media Graphics (Continued)

Graphic Set Seven



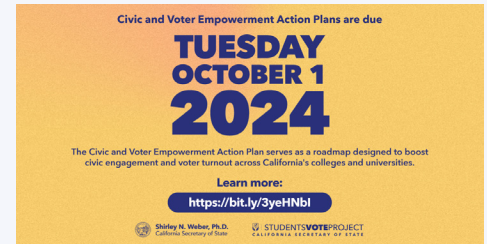
Instagram

Download Here



Snapchat

Download Here



Facebook

Download Here



X

Download Here

College Student Voter Registration Button



Website Button

Download Here

To share the college student voter registration link on a campus website, follow the instructions below:

Copy and paste the sample code to your web page.

```
<a href="https://registertovote.ca.gov/?t=s"></a>
```

Note: This website button leads to the college student voter registration link (<https://registertovote.ca.gov/?t=s>), and will allow the name of the college you attend to be included in your voter registration.

Voter Education Posters (16 in x 20 in)



SEPTEMBER 17
NATIONAL VOTER REGISTRATION DAY

Update your registration today!
registertovote.ca.gov/?t=s

Shirley N. Weber, Ph.D. California Secretary of State | STUDENTSVOTEPROJECT CALIFORNIA SECRETARY OF STATE

Download Here



THE GENERAL ELECTION IS ON
November 5 2024

Find where to drop off your ballot or nearest polling location:
caearlyvoting.sos.ca.gov

Shirley N. Weber, Ph.D. California Secretary of State | STUDENTSVOTEPROJECT CALIFORNIA SECRETARY OF STATE

Download Here



How will I know what's on the 2024 General Election ballot?

Are you registered to vote? Registered voters are eligible to receive a mailed copy of the state voter information guide!

I registered! What information does the state voter information guide have?

It has information on statewide elections, key election dates, ballot measures and much more. It's also online at voterguide.sos.ca.gov/! Counties will provide their county voter information guide for local elections and measures.

Thank! This information will help me become an informed voter!

Shirley N. Weber, Ph.D. California Secretary of State | STUDENTSVOTEPROJECT CALIFORNIA SECRETARY OF STATE

Download Here



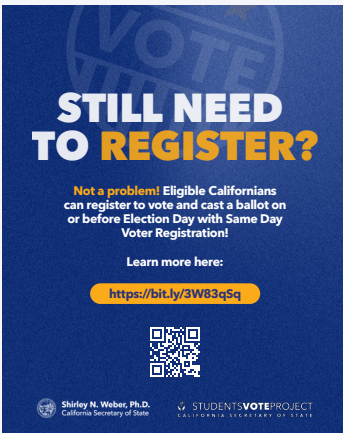
College Students: Don't Forget!

October 21 is the last day to register to vote online or by mail ahead of the 2024 General Election

registertovote.ca.gov/?t=s

Shirley N. Weber, Ph.D. California Secretary of State | STUDENTSVOTEPROJECT CALIFORNIA SECRETARY OF STATE

Download Here



STILL NEED TO REGISTER?

Not a problem! Eligible Californians can register to vote and cast a ballot on or before Election Day with Same Day Voter Registration!

Learn more here:
<https://bit.ly/3W83q5q>

Shirley N. Weber, Ph.D. California Secretary of State | STUDENTSVOTEPROJECT CALIFORNIA SECRETARY OF STATE

Download Here



SKIP THE LINE

Every active registered voter will receive a vote-by-mail ballot for the 2024 General Election!

Find your nearest ballot drop-off location here:
caearlyvoting.sos.ca.gov

Shirley N. Weber, Ph.D. California Secretary of State | STUDENTSVOTEPROJECT CALIFORNIA SECRETARY OF STATE

Download Here



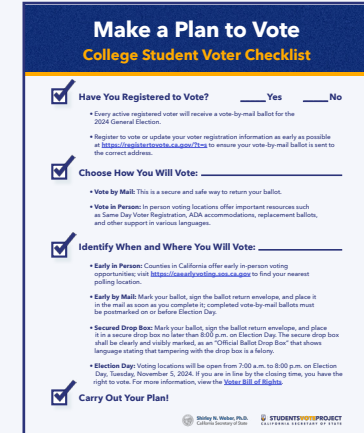
Civic and Voter Empowerment Action Plans are due
TUESDAY OCTOBER 1 2024

The Civic and Voter Empowerment Action Plan serves as a roadmap designed to boost civic engagement and voter turnout across California's colleges and universities.

Learn more:
<https://bit.ly/3yeHNbl>

Shirley N. Weber, Ph.D. California Secretary of State | STUDENTSVOTEPROJECT CALIFORNIA SECRETARY OF STATE

Download Here



Make a Plan to Vote
College Student Voter Checklist

- Have You Registered to Vote?** Yes No
 - * Every active registered voter will receive a vote-by-mail ballot for the 2024 General Election.
 - * Register to vote or update your voter registration information as early as possible at <https://registertovote.ca.gov/?t=s> to ensure your vote-by-mail ballot is sent to the correct address.
- Choose How You Will Vote:** _____
 - * **Vote by Mail:** This is a secure and safe way to return your ballot.
 - * **Vote in Person:** In-person voting locations offer important resources such as Same Day Voter Registration, ADA accommodations, replacement ballots, and other support in various languages.
- Identify When and Where You Will Vote:** _____
 - * **Early in Person:** Counties in California offer early in-person voting opportunities. Visit <https://www.electioninfo.ca.gov/> to find your nearest polling location.
 - * **Early by Mail:** Mark your ballot, sign the ballot return envelope, and place it in the mail as soon as you complete it; completed vote-by-mail ballots must be postmarked on or before Election Day.
 - * **Secured Drop Box:** Mark your ballot, sign the ballot return envelope, and place it in a secure drop box no later than 8:00 p.m. on Election Day. The secure drop box shall be clearly and visibly marked, as an "Official Ballot Drop Box" that shows language stating that tampering with the drop box is a felony.
 - * **Election Day:** Voting locations will be open from 7:00 a.m. to 8:00 p.m. on Election Day, Tuesday, November 5, 2024. If you are in line by the closing time, you have the right to vote. For more information, view the [State Ballot Guide](https://www.electioninfo.ca.gov/).
- Carry Out Your Plan**

Shirley N. Weber, Ph.D. California Secretary of State | STUDENTSVOTEPROJECT CALIFORNIA SECRETARY OF STATE

Download Here

Voter Education Television Graphics (1920px x 1080 px)



Download Here



Download Here



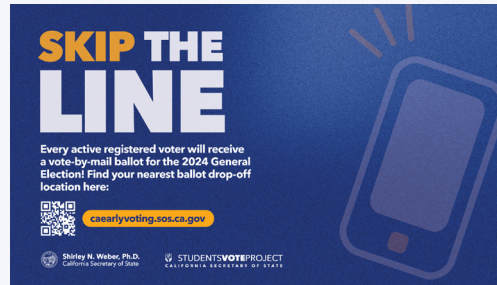
Download Here



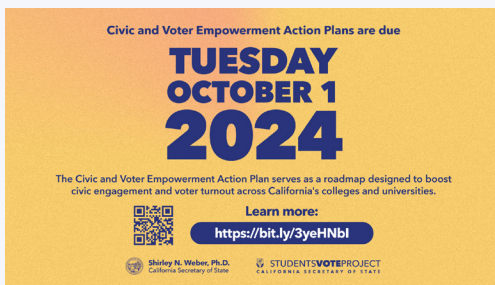
Download Here



Download Here



Download Here



Download Here

Make a Plan to Vote

College Student Voter Checklist



Have You Registered to Vote? _____ Yes _____ No

- Every active registered voter will receive a vote-by-mail ballot for the 2024 General Election.
- Register to vote or update your voter registration information as early as possible at <https://registertovote.ca.gov/?t=s> to ensure your vote-by-mail ballot is sent to the correct address.



Choose How You Will Vote: _____

- **Vote by Mail:** This is a secure and safe way to return your ballot.
- **Vote in Person:** In person voting locations offer important resources such as Same Day Voter Registration, ADA accommodations, replacement ballots, and other support in various languages.



Identify When and Where You Will Vote: _____

- **Early in Person:** Counties in California offer early in-person voting opportunities; visit <https://caearlyvoting.sos.ca.gov> to find your nearest polling location.
- **Early by Mail:** Mark your ballot, sign the ballot return envelope, and place it in the mail as soon as you complete it; completed vote-by-mail ballots must be postmarked on or before Election Day.
- **Secured Drop Box:** Mark your ballot, sign the ballot return envelope, and place it in a secure drop box no later than 8:00 p.m. on Election Day. The secure drop box shall be clearly and visibly marked, as an "Official Ballot Drop Box" that shows language stating that tampering with the drop box is a felony.
- **Election Day:** Voting locations will be open from 7:00 a.m. to 8:00 p.m. on Election Day, Tuesday, November 5, 2024. If you are in line by the closing time, you have the right to vote. For more information, view the [Voter Bill of Rights](#).



Carry Out Your Plan!

